

Cruise Plan:

August 8-23, 2014- California Delta Cruise

Cruise

It is time for a relaxing exploration of the California Delta. This region is a vast natural flood plain that stretches from the San Francisco bay area to Sacramento in the north, Stockton in the east and Discovery Bay in the south. The Sacramento and San Joaquin rivers provide access to the 700 mile network of inland waterways which make this region special.

Execution

2014 PYC Delta Cruise Roster														
Date		Location	Mike & Beth	Diane & Neal Parker	Linda & Forest Blue	Francesca & McKenzie Smith	Dee & Keith Jones	Al & Shirley Alys	Marty Little	Roy & Barbara Johnston	Tina & Steve Powell	Don & Gloria Roberts		
8-Aug	Friday	Pittsburg Yacht Club											Ant	
9-Aug	Saturday	Westgate Cove Tower Park												
10-Aug	Sunday	Westgate Cove Tower Park												
11-Aug	Monday	Delta Yacht Club												
12-Aug	Tuesday	Delta Yacht Club												
13-Aug	Wednesday	Delta Yacht Club									Hm			
14-Aug	Thursday	Delta Yacht Club												
15-Aug	Friday	Village West Yacht Club												
16-Aug	Saturday	Village West Yacht Club												
17-Aug	Sunday	Mildred Island Raft Up												
18-Aug	Monday	Mildred Island Raft Up												
19-Aug	Tuesday	Mildred Island Raft Up												
20-Aug	Wednesday	Oxbow Marina												
21-Aug	Thursday	Oxbow Marina												
22-Aug	Friday	Benicia											Total of	
23-Aug	Saturday	Benicia											Lengths	
Boat Lengths			45	36	45	38		40	40	42	45	40	45	416

Itinerary: California Delta Cruise

Pittsburg – Friday August 8th

- Cheapest Fuel in the Bay Area
- Wonderful Farmers Market
- Cruisers Stopping: Parkers & Sibbald/Chapman
 - o You are both signed up for the Friday night Dinner at the Pittsburg Yacht Club
 - o \$15/person for dinner
 - o \$.50/foot/night for berthing
 - o Pay Berthing at Kiosk on the Dock
- Port Captain: David Stickney
 - o Email: davidbstickney@gmail.com
 - o Phone: 415-601-1595

Tower Park – Saturday & Sunday August 9th & 10th

The Taste of The Delta fund-raiser for the California Delta Chambers showcases Delta Wineries and Restaurants. Guests sample wines, food, enjoy vendor booths, live music, and silent and live auctions.

- Wine & Food Tastings
- Local arts, crafts, jewelry, and more.
- Live Music
- Live Auction & Door Prize

Tickets are \$25 in advance and \$30 at the door!
Ticket purchase includes a Souvenir Glass.

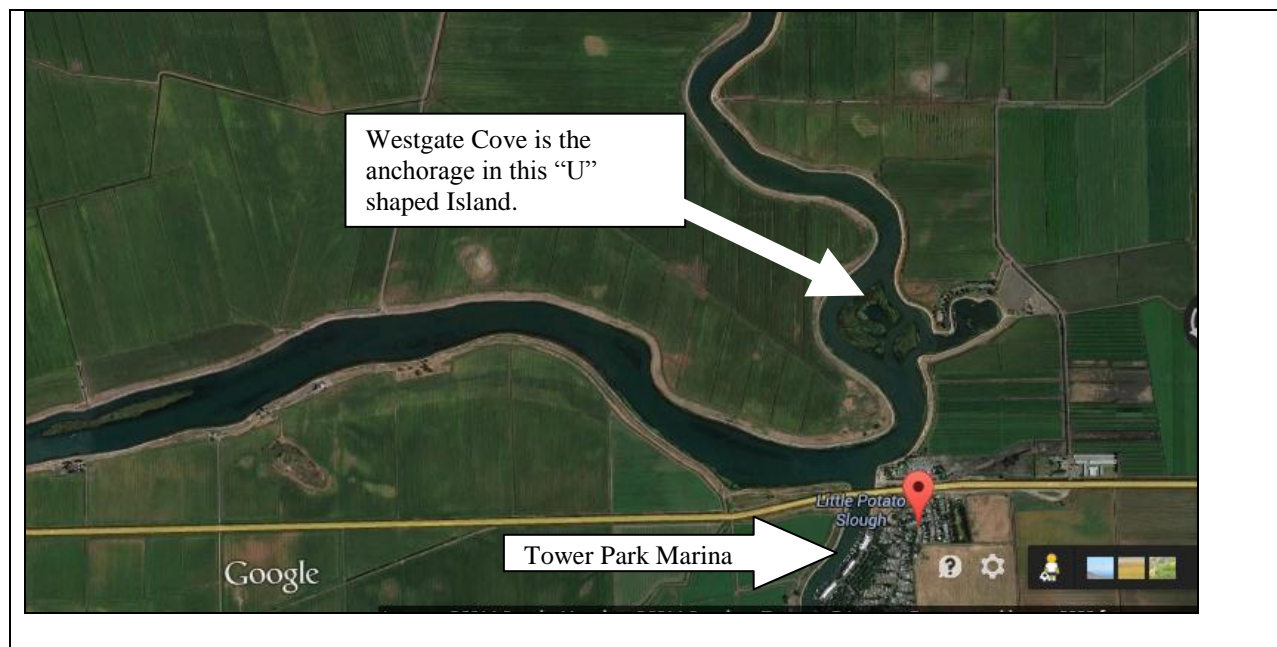
<http://californiadeltaevents.com/event-listings/2013/11/08/1656/taste-of-the-delta-2014/>



Note:

We will actually anchor out in Westgate Cove.
It is just a short dinghy ride from the anchorage to Tower Park.

- Port Captain to Organize Anchoring: *Need a Volunteer*



Delta Yacht Club – Monday to Thursday, August 11th -14th.

- Swimming Pool, Barbeques, Golf Course, large grass area. (**confirmed Reservation**)
- Potluck Dinner with San Francisco Yacht Club on Wednesday night, 13 August.
 - o Each club will provide an appropriate balance of:
 - Entrées
 - Side Dishes/Salads
 - Desserts
 - o I believe SFYC is providing live music that evening as well
- PYC is docking on the inside and outside of the Channel end (North-East end) of the dock
 - o See illustration on next page
- Berthing Fee: \$50/night



Village West Yacht Club – Friday & Saturday, August 15th & 16th

- Website: <http://www.vwyc.com/html/home.html>
- **Confirmed reservation:** Port Captain: Lane Schoch [530-333-4192](tel:530-333-4192)
- Big Cat Poker Run on Saturday the 15th: <http://www.bigcatpokerrun.com>



Mildred Island Raft Up – Sunday-Tuesday, August 17th – August 20th



Oxbow Marina – Weds/Thurs, August 20th & 21st.

Good Biking Opportunities
Swimming Pool on site
Grassy Area with BBQ's
Small General Store
Oxbow has 6 new RV hookups overlooking the water as well as a three bedroom mobile home for rent.

Confirmed Reservation

Phone: [800-848-1578](tel:800-848-1578)



Benicia - Friday, August 22nd

- Confirmed Reservation: 3 boats
- Harbormaster: [707-745-2628](tel:707-745-2628)

Home Port - Saturday August 23rd

- Return to your home port

Administration and Logistics

1. Cruise Events

2. Rations

- Bring your own provisions with the following exceptions:
- August 13th: Potluck/BBQ with the San Francisco Yacht Club while at the Delta Yacht Club

3. Tides and Currents Information:

<http://tidesandcurrents.noaa.gov/ports/index.html?port=sf>

4. Delta Charts: NOAA chart numbers:

- 18661 - Sacramento and San Joaquin Rivers
- 18662 - Sacramento River, Andrus Is. to Sacramento
- 18652 - San Francisco Bay to Antioch

5. Berthing Information

- See details in the Itinerary portion of the Cruise Plan

6. Medical Evacuation

- For Emergency Services dial: 911

Command and Signal

1. Communications

- PYC Cruise Communications: VHF Channel: 68
- Bridge Openings: VHF Channel 9
 - o Sound Signal: long followed by a short blast
 - o Rio Vista Bridge @ (707) 374-2134
- Vessel Traffic Service: VHF Channel 14
- Ship to Ship: VHF Channel 13
- Cruise Director: Mike Freeman (707) 953-4745

Appendix 1: Delta Yacht Club Visitor Rules

1) General

- a) Boats will be charged \$50.00 per night. Arrival time is 10:00 am, departure time is by 10:30 am
- b) No camping or overnight sleeping is allowed on the Island.
- c) No explosives, fireworks, firearms or projectile propelling devices (including, but not limited to, pellet guns, BB guns, paintball guns, and slingshots) are permitted on the island or docks.
- d) The Club Caretaker and his family are entitled to privacy in their home. Please respect it. We request that communication with the caretaker during your cruise-in be through the Commodore or other Delta Yacht Club member.

2) Bar Operation

- a) The Club bar will be open at 5:00 pm for your convenience during your cruise-in. We will be happy to open the bar during other hours upon your cruise director's request.
- b) **No alcoholic beverages are allowed on the Island when the Club Bar is open.** This is a State of California Alcohol Beverage Control (ABC) rule and, if violated, could cause Delta Yacht Club's Liquor License to be revoked or suspended.
- c) Alcoholic beverages are sold by a drink "ticket" only. A bar card costs \$40 and are good for 10 drinks (a glass of wine or a can of beer counts as one drink). We also sell "half" tickets for \$25, good for 5 drinks.
- d) Bottles of house wine are available any time the bar is open. Please check with one of the DYC Representatives for pricing and availability.
- e) Bar cards are not refundable, but will be honored indefinitely.

3) Pool Rules

- a) The swimming pool is open from 8 am to 8 pm.
- b) No child under age 14 may swim unattended. You are responsible for your own child.
- c) No glass containers are permitted in the enclosed area.
- d) Please do not interfere with the pool sweep or other pool equipment.

4) Pets

- a) Pets must be on a leash whenever they are on the Island. Guests must be in control of their pets at all times and pets must not be left attended at any time.
- b) Pets are not permitted in Island buildings or the pool area at any time and are not allowed in the patio area during the evening hours between 6 and 9 pm.
- c) A pet area is provided behind the fence to the right of the pool. Please walk your pet in the pet area only. Please use the scoops that have been provided for the removal of animal waste from the grass, both in the pet area and when accidents occur elsewhere. Dispose of all animal waste in the four disposals located in the pet area. Do not place anything other than pet waste in the receptacles. ***Please clean up after your own dog . . . always!***

5) Disposal of Garbage

a) We can accept only Clubhouse waste (for example, paper plates from dinner). All garbage generated on your boat must be taken with you. There is a separate can for recyclable aluminum containers. There are garbage cans in the galley and behind the barbecue area.

6) Ice Machines

a) The ice machines are not for cooling refreshments. Use the refrigerator in the galley.

7) Barbecues

Our barbecues are available for use to all. Charcoal and lighter fluid is available in the barbecue area. Barbecuing is not permitted on boats or docks.

8) Small Boats

Small boats, inflatables, PWCs, etc. (small boats) may not be tied to the outside of the front dock at any time. Small boats should be tied alongside your larger boat on the front dock. If there is room, small boats may be tied to the inside of the front dock, but may be moved to accommodate larger vessels.

9) Children's use of the Island.

The Island is an ideal place for children and we want them to enjoy it fully and safely. Please insure that they follow these simple rules for their benefit and our peace of mind.

a) All children who are not able swimmers must wear a life jacket at all times when on the docks. They may leave them at the head of the gangway when ashore.

b) No running on the docks.

c) No bare feet, except in the pool area and when swimming from the dock.

d) No playing in the heads

10) Fishing is permitted only from the ends of the dock or from your boat.

11) Facilities on the Island

a) Water on the docks, in the heads and from the faucets on the Club grounds is not suitable for drinking. Filtered water is available in the galley and bar.

b) We have a septic tank system that is very sensitive to improper use. Please do not use more paper than is necessary and do not deposit tampons or other foreign objects in the heads.

c) Do not operate any sprinklers or other valves or switches. Severe damage can result from turning the wrong valve.

12) Use of the Clubhouse

a) Please wash your dishes and barbecue tools when you are finished and do not leave them in the galley for the afternoon or overnight.

b) Please leave the galley clean.

c) Please remove all of your dishes and other possessions from the Clubhouse when you have finished your meal and clean the tablecloth. Sponges are available in the galley.

d) Members and guests are requested to wear appropriate attire in the Clubhouse after 6:00 pm. Please no bathing suits, tank tops, etc.

13) NO RENTAL BOATS PERMITTED. This is a liability issue.

14) Insurance Coverage: Each cruise-in guest is responsible for having liability insurance. Please keep a copy on your boat, as you may be requested to show proof of insurance.

Appendix 2: Potluck Signups for Delta Yacht Club

When: Wednesday 13 August

With Whom: San Francisco Yacht Club

Time: ~4:30 Happy Hour

~6:00 pm Potluck Dinner

Name	Entree	Appetizer	Side	Dessert
Freeman/Darrow				
Parkers				
Blues				
Jones				
Alys				
Little				
Johnston				
Sibbald/Chapman				
Roberts				
Tina/Steve Powell				

Appendix 3: Costs

Location	Berthing Cost	Dinner Cost
Pittsburg Yacht Club	\$.50/ft/night	\$15.00/person-Friday Night only
Westgate Cove	No Cost – anchor out	Saturday, Taste of the Delta: \$25/person advance purchase. \$30/person day of the event.
Delta Yacht Club	\$50/night	Details covered elsewhere
Village West Yacht Club	\$15/night	~\$12/person-Friday night only
Oxbow Marina		
Benicia Marina		