

CHINOOK (KING) SALMON

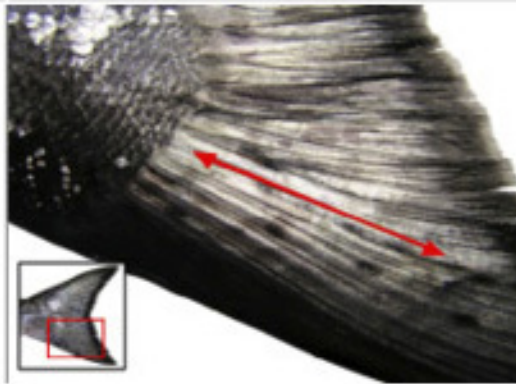
MOST RELIABLE FEATURE

Lower jaw is dark or mottled from outside gums through base of teeth to inside gums.



SECONDARY FEATURE

Tail fin rays are smooth along length of rays.



LESS DEPENDABLE FEATURE

Round, black spots *may* be present on both upper and lower lobes of tail. Extremely variable in saltwater.



COHO (SILVER) SALMON

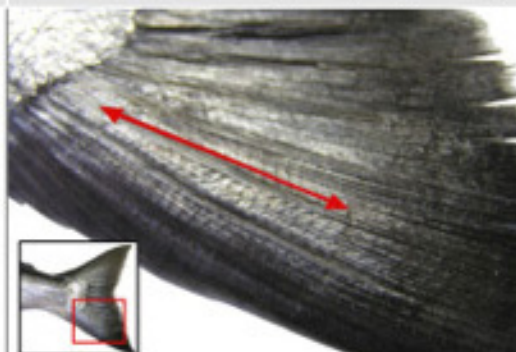
MOST RELIABLE FEATURE

Lower jaw is banded from dark outside teeth, to white at base of teeth, to dark inside teeth.



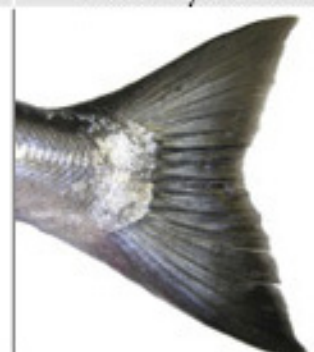
SECONDARY FEATURE

Tail fin rays are ribbed with prominent crosshatching along length of rays.



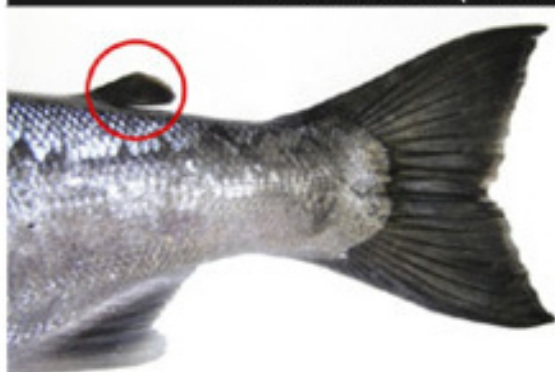
LESS DEPENDABLE FEATURE

Round, black spots *may* be present on upper lobe of tail. Extremely variable in saltwater.

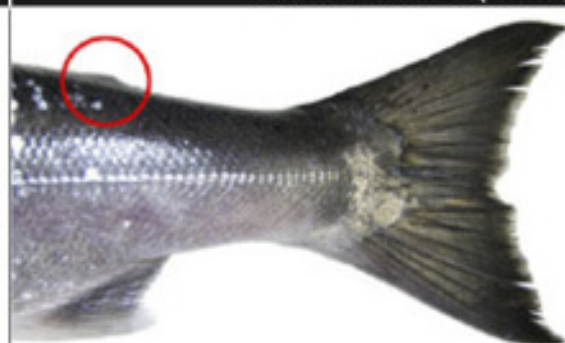


HOW TO IDENTIFY HATCHERY FISH

WILD: NOT FIN-CLIPPED (UNMARKED)



HATCHERY: FIN-CLIPPED (MARKED)



Unless otherwise noted, hatchery salmon, steelhead, and trout are marked by removing their adipose fin.