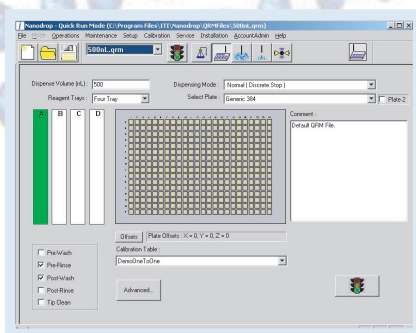


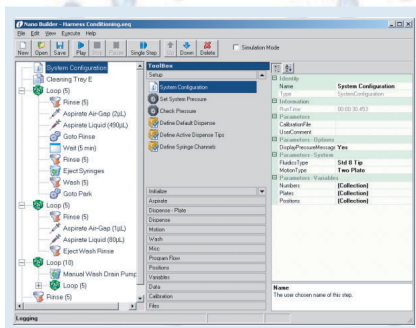
Innovadyne Technologies, Inc. offers instrument control and integration software options ranging from easy-to-use graphical user interfaces (GUI's) for novice users to full object-oriented programming tools and interfaces. Both the Nanodrop GUI and Nanobuilder can be used as components in integrated systems. There are many systems in the field that have been integrated by top integrators worldwide.

Nanodrop™ GUI



The **Nanodrop GUI** (Graphical User Interface) is a user-friendly instrument control environment for all Innovadyne Nanodrop dispensing instrument models. The Nanodrop GUI program is the easiest-to-use instrument control software that Innovadyne offers, and is ideally suited to entry-level users and users with more generic dispensing requirements. The Nanodrop GUI features simple-to-create Quick Run Methods (QRM's), icon buttons for basic operations (like Wash and Start Dispense), destination plates selected from a plate library, and aspirate and dispense parameters entered in text boxes and chosen from selection lists.

Nanobuilder®



Nanobuilder is an instrument control development environment for Nanodrop and Screenmaker dispensing instruments built on the industry standard Microsoft .NET architecture. Use of the .NET architecture provides Nanobuilder with extensive data manipulation and data sharing features useful for integration with other software. Nanobuilder enables you to create protocols or scripts -- called sequences -- that automate the operation of a Nanodrop™ or Screenmaker 96+8™ instrument under the control of a connected PC. A Nanobuilder sequence can control instrument operations ranging in complexity from simple wash operations to highly complicated multiple-plate liquid transfer applications, including protein crystallography. The entire range of operations that can be performed on the instrument can be programmed into Nanobuilder sequences.