

# CUTWATER 30 S

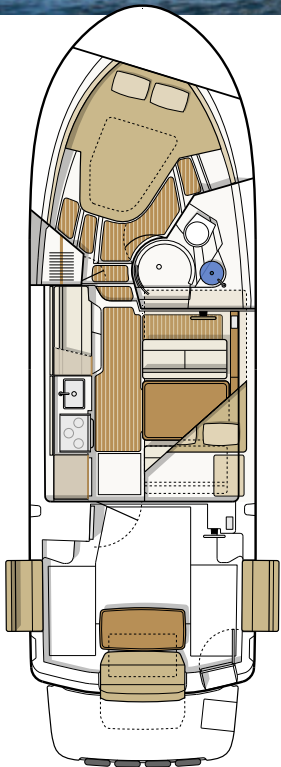


**The Cutwater 30 Sedan (C-30 S)** is well-known for its stability, comfort, and performance. The stepped, semi-planing hull gets you up to speed quickly and efficiently while the keel aids in precision handling and offers superior drivetrain protection. The spacious C-30 S is rich with standard features that provide for comfortable onboard living. An ingenious cockpit seating arrangement welcomes up to seven adults without crowding, and a new Euro-style galley conceals appliances beneath a hinged counter-top that's ideal for buffet or refreshment service.

The Cutwater 30 accommodates six on three separate berths, for exceptional privacy and comfort even on extended cruises. On the fore deck, two flush hatches open to reveal cushioned, secure observation seats, along with a central forward lounge. Add to this a long list of other features and the reliable performance of the 440-h.p. Volvo diesel engine for efficient express service to distant waterways, and you have a masterpiece of innovation that ensures unsurpassed enjoyment, year after year.

## Specifications

|                                  |   |          |
|----------------------------------|---|----------|
| LOA molded                       | 30'   | 9.14 m   |
| LOA rigged (with swim & pulpit)  | 35' 8"  | 10.9 m   |
| Bridge clearance (bridge folded) | 9' 9"   | 2.97 m   |
| Beam                             | 10'   | 3.05 m   |
| Draft                            | 29"   | 0.73 m   |
| Height on trailer                | 13' 2"  | 4 m      |
| Length on trailer                | 40' 2"  | 12.24 m  |
| Fuel capacity                    | 180 U.S. Gal                                      | 681.4 L  |
| Water capacity                   | 60 U.S. Gal                                       | 227.1 L  |
| Holding tank capacity            | 40 U.S. Gal                                       | 151.4 L  |
| Weight (dry)                     | 10,200 lbs  | 4,626 kg |
| Engine                           | Volvo D6, 440 HP<br>Common Rail Electronic Engine |          |



# Standard Features

## Performance

440 HP Volvo D6 inboard  
**Electric trim tabs**  
 Stepped hull  
**Thruster, bow**  
**Thruster, stern**  
**Thruster, wireless remote**  
 Trailerable - 10' beam



## Accommodations & Interior Comfort

Cabin drink holders, 4  
 Cabin heater (engine)  
 Curtains for privacy  
 Dinette converts to bed  
**Electric toilet**  
**Fully enclosed head**  
**Fusion stereo system (multi-zone)**  
 Hatches, pilothouse roof, solar reflective, 3  
 Hatches, stateroom, 2  
 Indirect cabin lighting  
**Island bed**  
**LED lighting**  
**Marine head w/ holding tank, pump out**  
**Memory foam mattress**  
 Opening portlights, 7  
 Private stateroom  
 Second berth or stateroom  
 Shower with enclosure  
 Storage under mattress  
**Transom entry door for boarding**  
 TV/DVD in salon  
 TV/DVD in stateroom

## Deck Features

**Anchor package, 22 lb, 50' chain, 200' line**  
 Bow lounge seating, 3  
**Bow beaching ladder**  
**Bow pulpit**  
 Folding stainless steel mast for trailering  
 Forward line storage  
 Rocket launchers, 6  
**Rod holders, 2**  
**Sport racks**  
 Stainless steel swimming ladder  
**Swim step with built-in fenders**  
**Washdown system**  
**Windlass**

## Cockpit

**Cockpit cover, hard-top**  
 Cockpit drink holders, 4  
 Cockpit hardtop w/ hatches  
 Cockpit hardtop w/ lights  
**Cockpit refrigerator**  
 Cockpit seating, 6

Cockpit sink  
 Cockpit table  
 Fold-out cockpit seating  
 Fold-out gunwale seating  
**Opening glass bulkhead w/ reversible seat**  
**Powered engine hatch**  
 Reversible sunset seat

## Helm

**AIS receiving**  
**Autopilot**  
**Color engine display**  
**Digital fuel flow data**  
 Drink holder  
**Electronic shift and throttle control, single-lever**  
**Garmin navigation system w/ GPS and sonar, 8612xsv**  
**Garmin radar, xHD**  
 Helm seat, double  
 USB charging ports  
**Windshield wipers, 2**

## Galley

Galley cabinets, 3  
 Galley drawers, 2  
**Microwave**  
**Refrigerator/freezer**  
**Sink with hot and cold water**  
**Wine/water cooler**

## Mechanical & Electrical

AC electrical panel  
**Batteries**  
**Battery charger**  
 DC electrical panel  
**Inverter**  
**Macerator discharge**  
 Sea water strainers  
 Shore power cords  
**Solar panel w/ control panel**  
**Sonar**  
**Underwater Lights**

## Safety

Carbon monoxide detectors  
 Courtesy lights  
 Electric horn  
 Illuminated compass  
 Navigation lights  
**ReFlex high density closed cell foam decking**  
**Safety kit: fenders, lines, flares, fire ext, first aid kit, life jackets, boat hook**  
**Spotlight with remote**  
**Swim platform rails**  
**VHF radio, DSC capable**  
 Window Defrosters

## Construction

Bonded electrical system  
 Foam-filled fiberglass stringer grid system  
 Self bailing cockpit  
 Stainless steel cleats, rails, hardware  
 Vynylester barrier coat

## CUTWATER BOATS = MORE VALUE

**Bolded items:** High value features included in the price of the Cutwater C-30 S. Other manufacturers oftentimes list these features as options with an additional cost.

# Additional Factory Options

*Aft cockpit sun and sunset shades* \$1,575  
*Aft cockpit bimini top with boot* \$3,610  
*Aft steering, second station with electronic controls* \$5,220  
*Aluminum triple axle trailer, electric/hydraulic brakes, spare tire w/bracket* \$16,490  
*Cockpit freezer in lieu of standard refrigerator* \$630  
*Cockpit ice maker in lieu of standard refrigerator* \$630  
*Dinghy, inflatable RIB 290 CSM hypalon with Weaver davits, stand-off & winch* \$6,065  
*Downrigger plugs and pads (LE only, included in NW)* \$390  
*Factory Delivery Experience* \$3,150  
*Garmin Weather Antenna* \$1,575  
*Low speed module* \$2,100  
*Rocket launchers, arch with rod holders (6)* \$1,105  
*Volvo Five Year Extended Coverage* \$4,525  
*Hull color upgrade (from standard White)* \$7,875

## Cutwater 30 S Packages - FACTORY DIRECT PRICING

The Cutwater 30 S is sold **fully-equipped** and **ready to cruise** with an expansive collection of premium features and outfitted in one of two packages.

**Northwest Edition:** Most commonly used in colder climates where air conditioning would not be needed or necessary.

**Equipped with diesel heater & forced air furnace, downrigger plugs and pads, and propane stove & oven.**

### NORTHWEST EDITION, FULLY EQUIPPED FROM:

**\$339,937.00\***

**Luxury Edition:** Most commonly used in warmer climates where air conditioning is a must. **Equipped with air conditioning/reverse cycle heating, convection oven & microwave combo, diesel generator w/ sound shield, and electric stovetop.**

### LUXURY EDITION, FULLY EQUIPPED FROM:

**\$354,937.00\***

*\*Options, freight & taxes extra*

*Prices, specifications, equipment and options may change without notice. Information on this sheet should not be used for navigation. 0821*



17300 Tye st SE  
 Monroe, Washington, 98272  
 Phone 253.839.5213  
**www.CutwaterBoats.com**