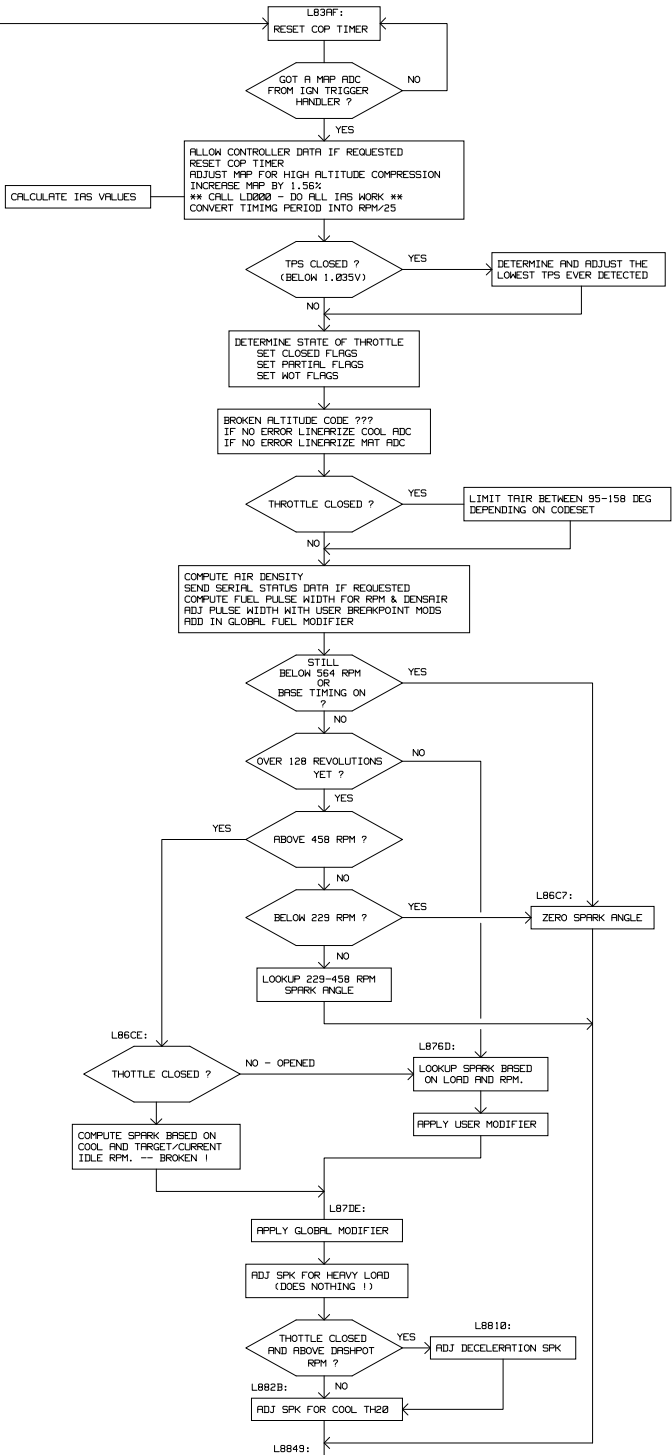
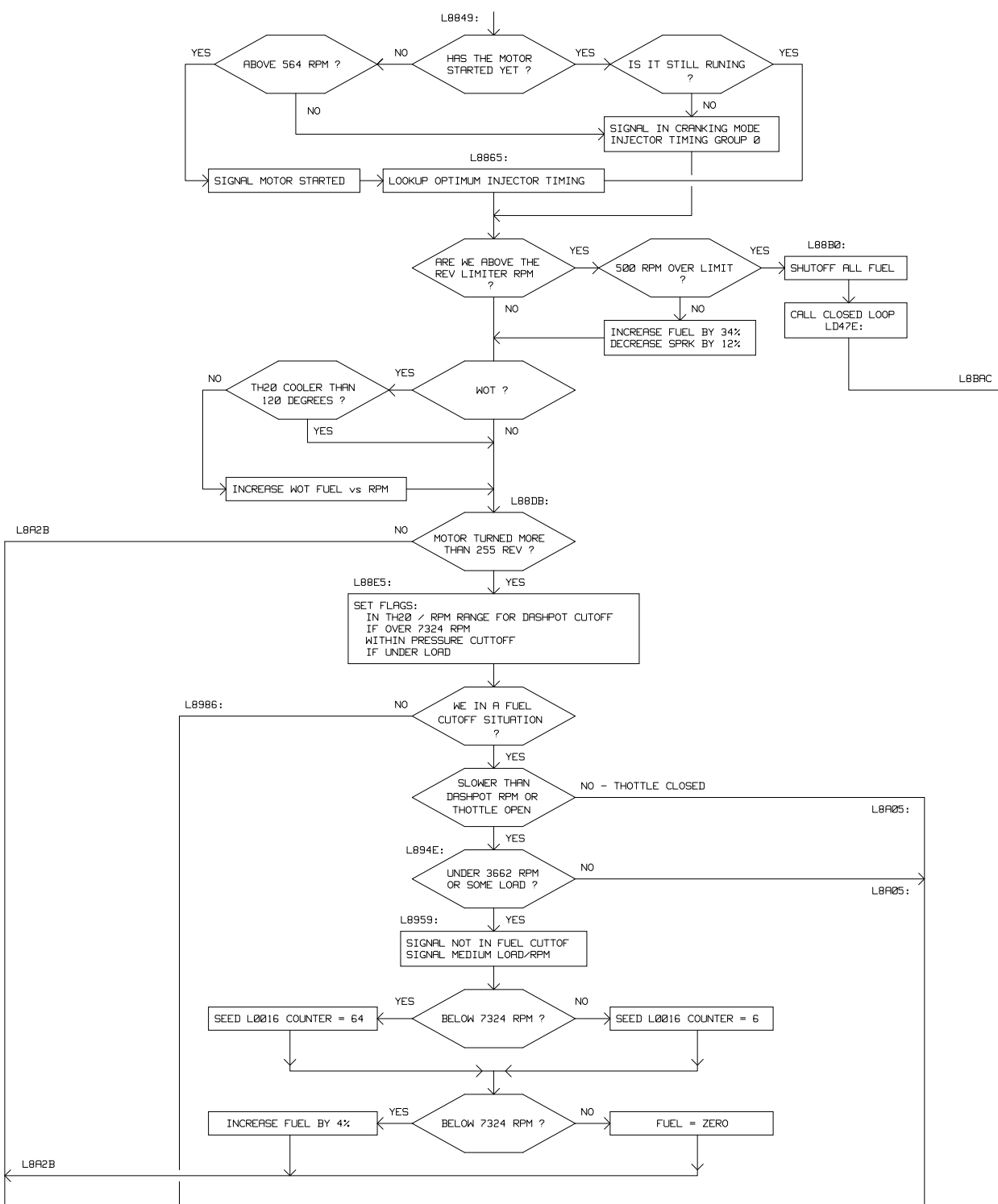
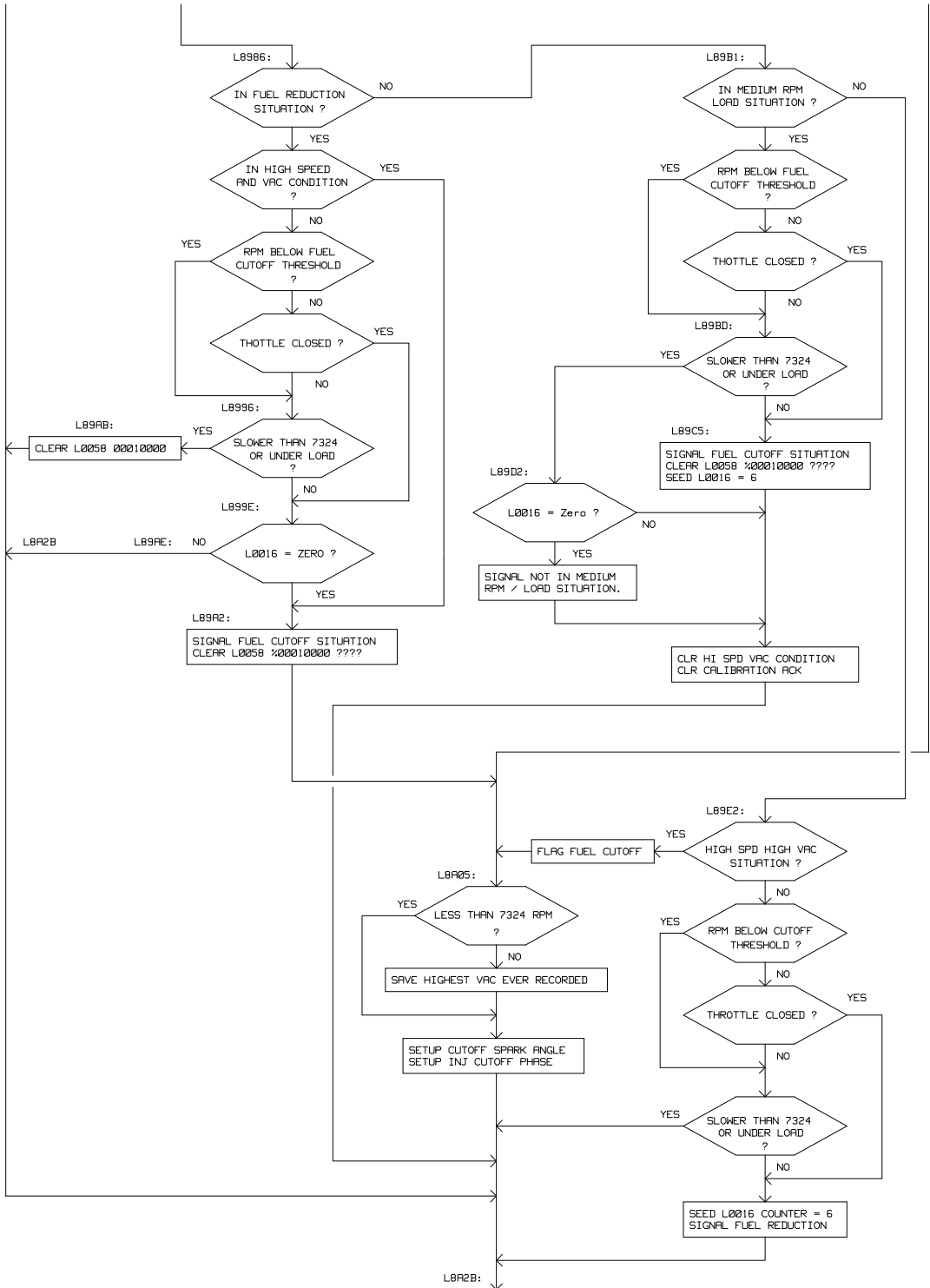


Top of Main Calibration Loop







L8986:

IN FUEL REDUCTION SITUATION ?

NO

YES

IN HIGH SPEED AND VAC CONDITION ?

YES

NO

YES

RPM BELOW FUEL CUTOFF THRESHOLD ?

NO

THOTTLE CLOSED ?

YES

NO

L8996:

SLOWER THAN 7324 OR UNDER LOAD ?

YES

L899E:

L0016 = ZERO ?

NO

YES

SIGNAL FUEL CUTOFF SITUATION CLEAR L0058 %00010000 ???

L89A2:

L89AB:  
CLEAR L0058 00010000

L89A2B

L89A2B

L89B1:

IN MEDIUM RPM LOAD SITUATION ?

NO

YES

RPM BELOW FUEL CUTOFF THRESHOLD ?

YES

NO

THOTTLE CLOSED ?

YES

NO

L89BD:

SLOWER THAN 7324 OR UNDER LOAD ?

YES

NO

L89C5:

SIGNAL FUEL CUTOFF SITUATION CLEAR L0058 %00010000 ??? SEED L0016 = 6

L89D2:

L0016 = Zero ?

NO

YES

SIGNAL NOT IN MEDIUM RPM / LOAD SITUATION.

CLR HI SPD VAC CONDITION CLR CALIBRATION ACK

L89E2:

HIGH SPD HIGH VAC SITUATION ?

YES

NO

FLAG FUEL CUTOFF

L89A5:

LESS THAN 7324 RPM ?

YES

NO

SAVE HIGHEST VAC EVER RECORDED

SETUP CUTOFF SPARK ANGLE SETUP INJ CUTOFF PHASE

RPM BELOW CUTOFF THRESHOLD ?

YES

NO

THOTTLE CLOSED ?

YES

NO

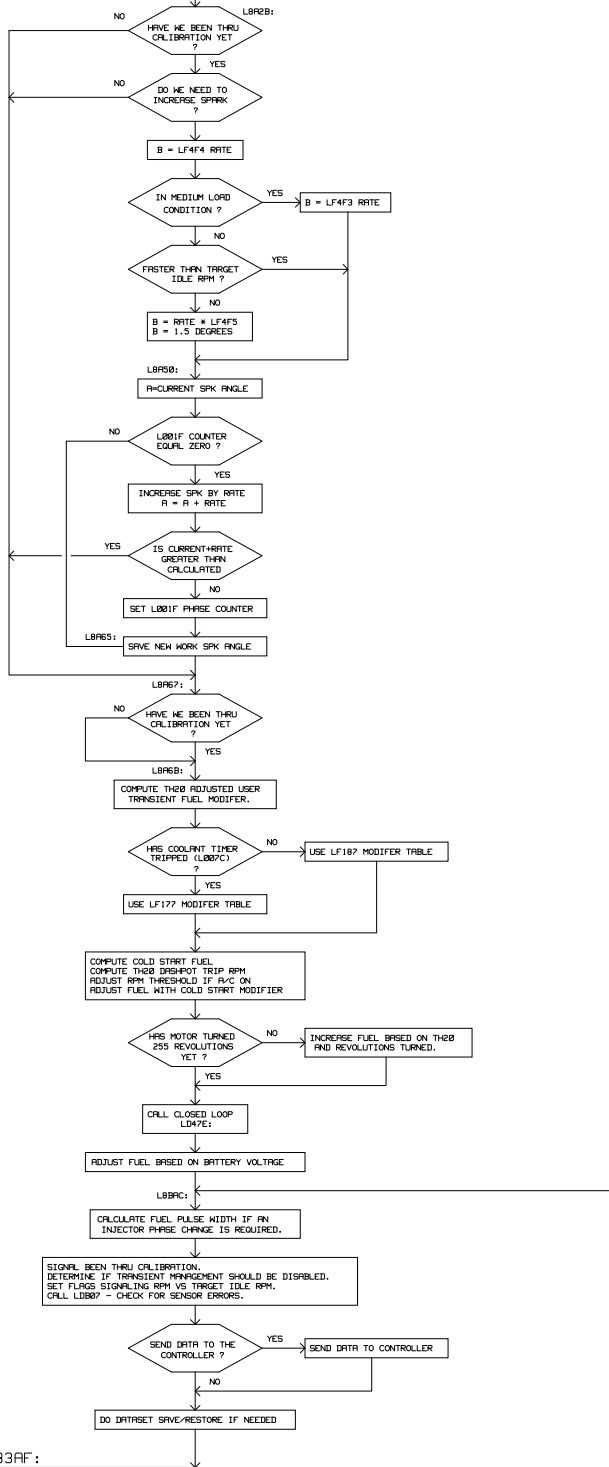
SLOWER THAN 7324 OR UNDER LOAD ?

YES

NO

SEED L0016 COUNTER = 6 SIGNAL FUEL REDUCTION

L89A2B:



LOOP BACK TO TOP --> L83AF: