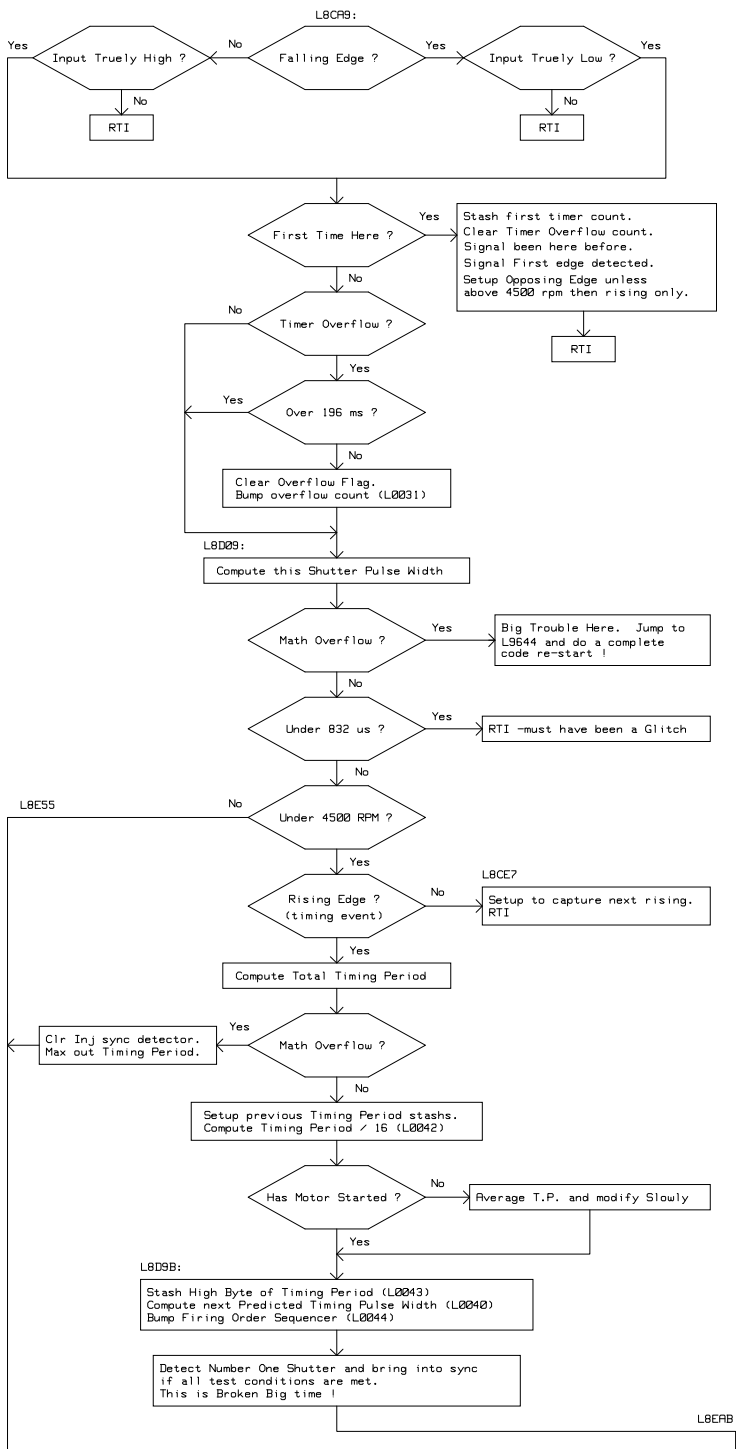
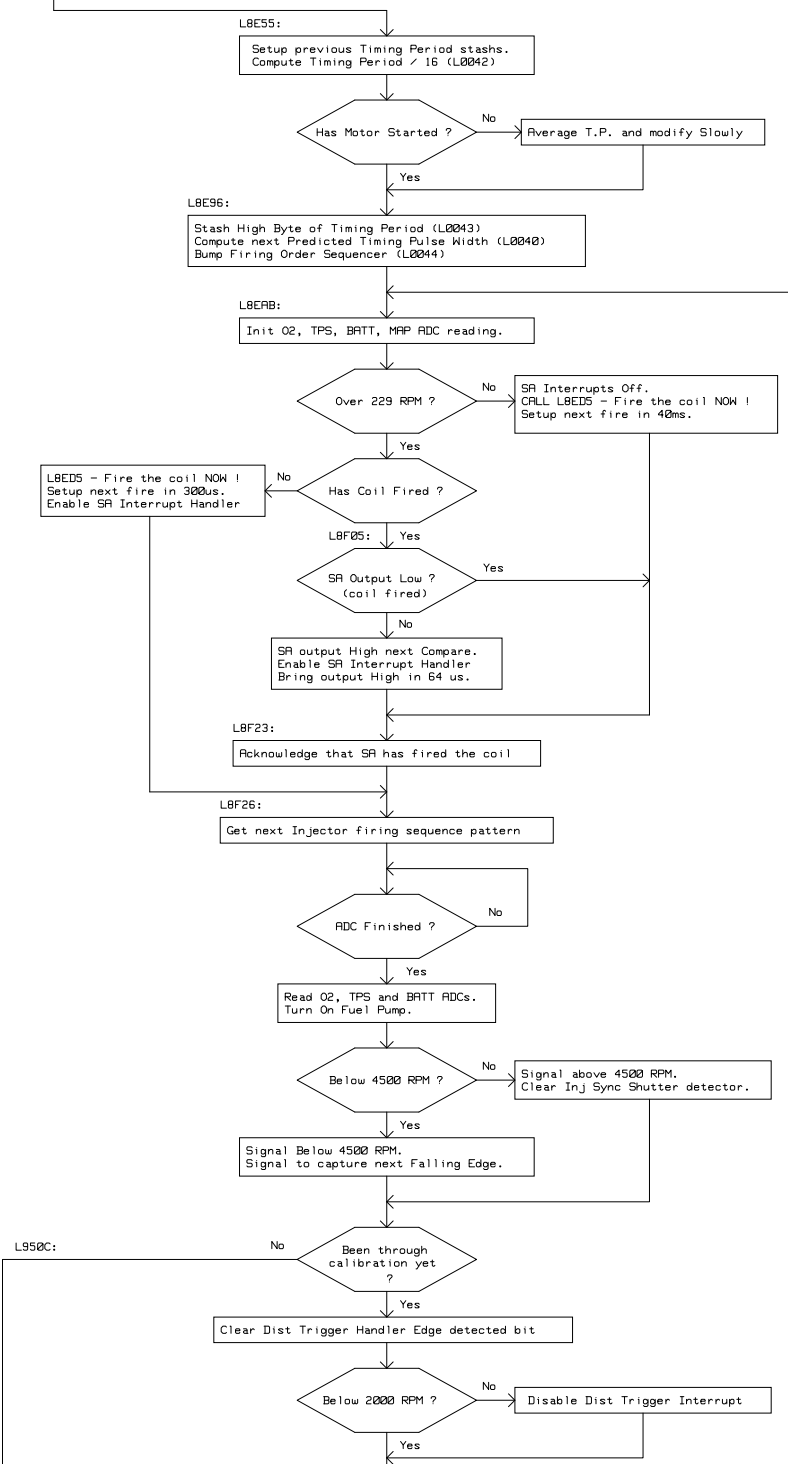
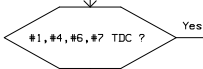


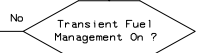
Distributor Trigger Interrupt Handler



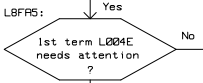




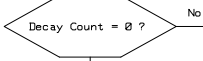
L8F85:
 Read MAP ADC.
 Average in last MAP ADC reading --> L002a
 Signal Calibration we have a new MAP reading.



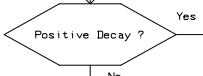
Clear Transient Fuel Stashes



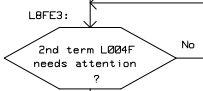
Decrement L0050 Decay counter



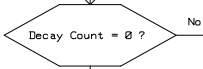
Reseed Transient Counter L0050



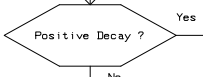
Decrease Rate - L004E



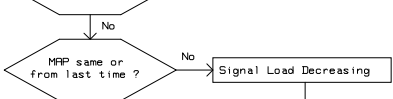
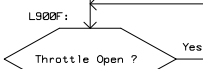
Decrement L0051 Decay counter



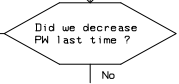
Reseed Transient Counter L0051



Decrease Rate - L004F



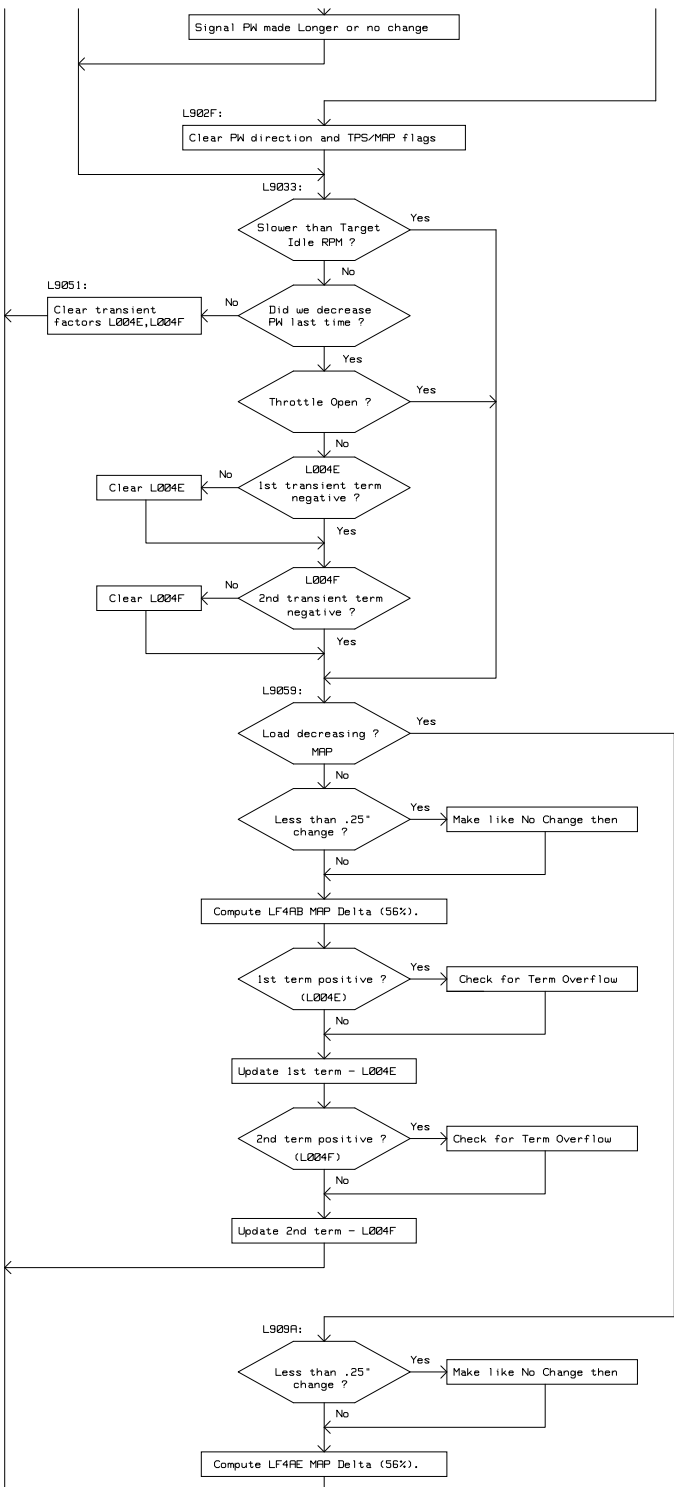
Signal Load Decreasing

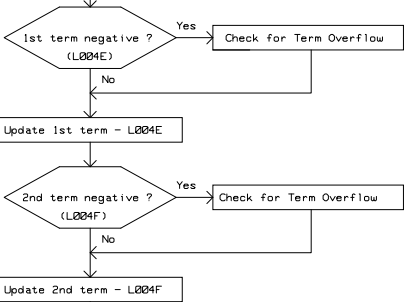


NO - Increasing

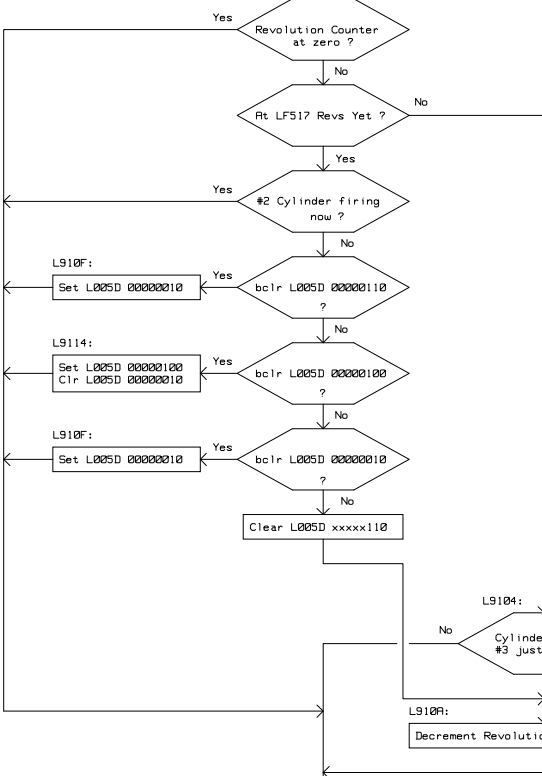
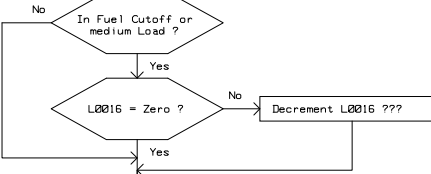
Yes

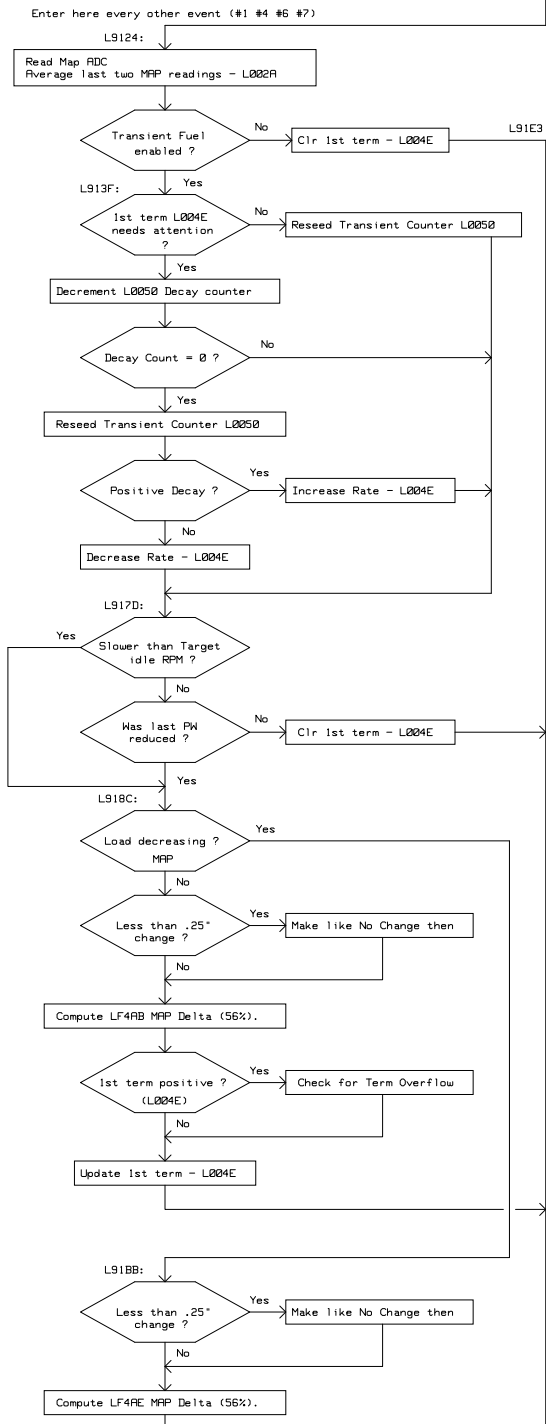
No

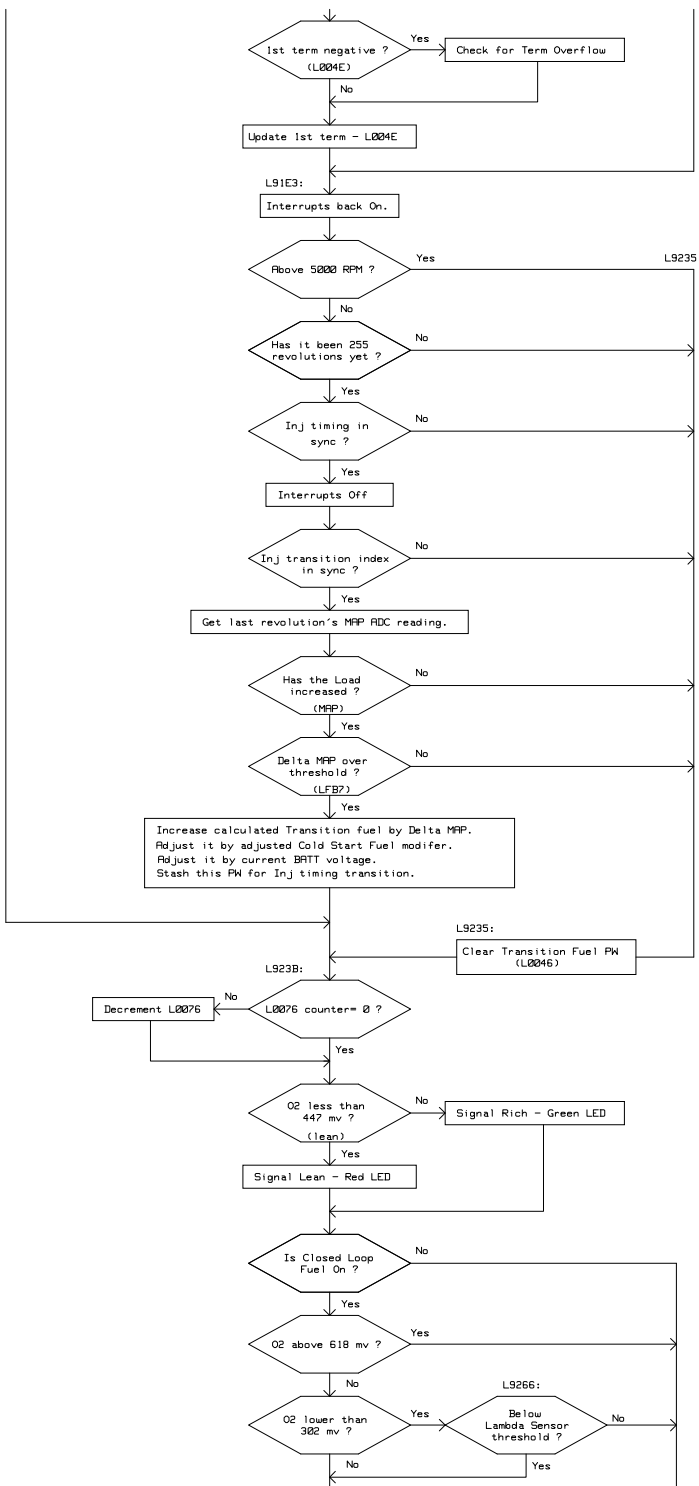


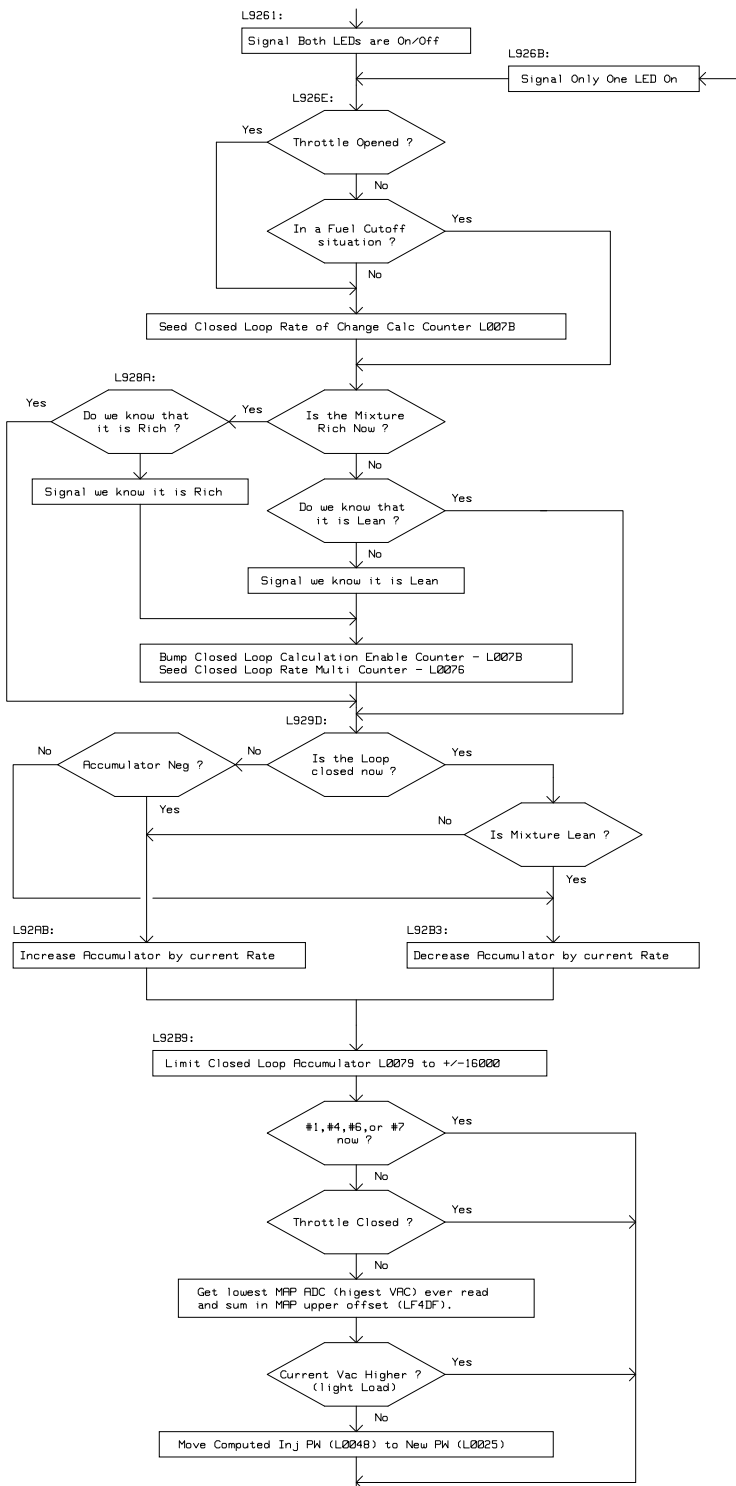


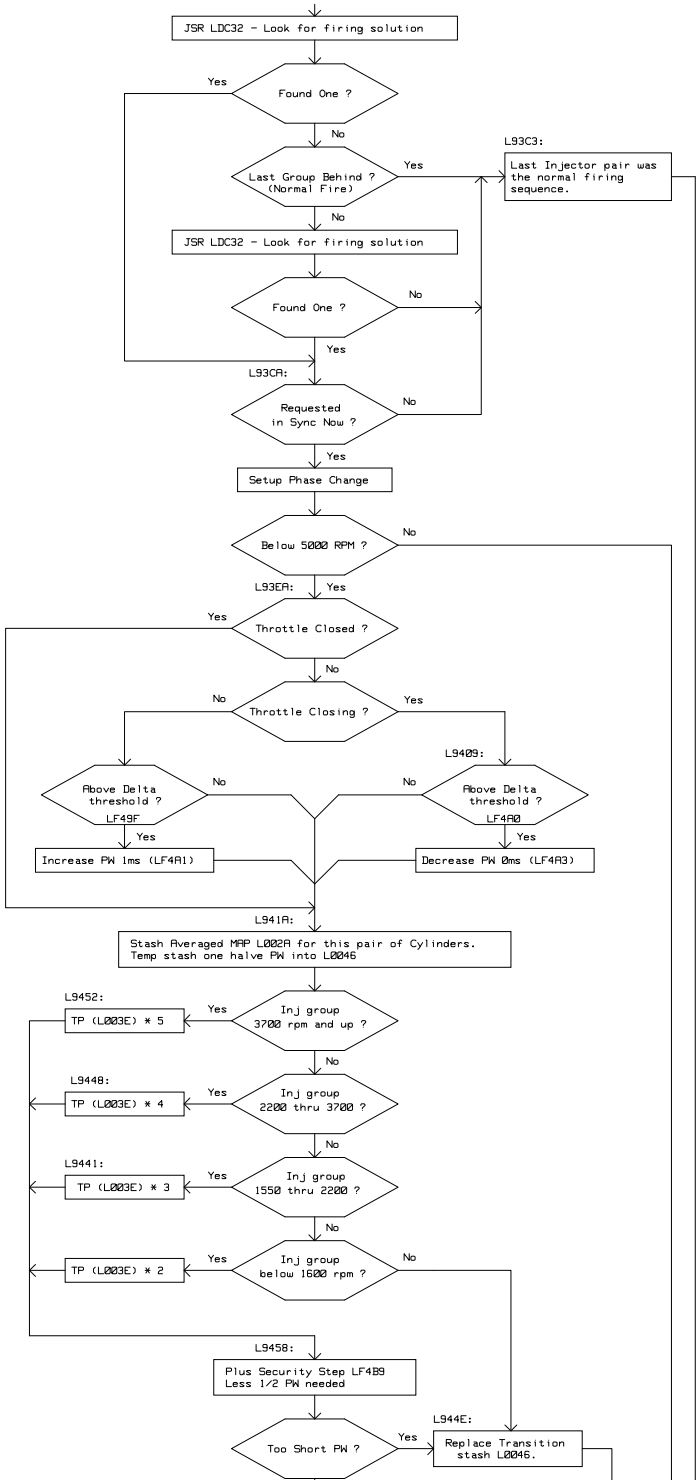
L90D2:
Interrupts Back on.
Decrement L001F Counter ???











Replace Transition
stash L0046.
Update Inj Phase Flag.

L946E:
Loop Closed ?

Increase PW by Rate L007E

Mixture Rich ?

Decrease PW by Rate L007E

L9490:
Hi Speed VRC
condition ?

Calibration Ack Hi
VRC condition ?

L949A:
Below Upper RPM
cutoff threshold ?
LF4DB

High Vacuum ?

Signal Hi Spd Vacuum Condition

L94B2:
Zero PW and Transition Stashes

L94B9:
Interrupts Off.
Point to correct 6840 Timer.
CALL LDR7E - Fire Injector Pair with L0025 PW.

L94CA:
Hi Speed VRC
condition ?

Calibration Ack Hi
VRC condition ?

L94D4:
Below Upper RPM
cutoff threshold ?
LF4DB

High Vacuum ?

Signal Hi Spd Vacuum Condition

L94EC:
Zero PW and Transition Stashes

L94F3:
Any transition PW
needed ?
L0046

On #1, #4, #6 or #7
cylinder ?

Point to transition 6840 timer.
CALL LDR7E - Fire Injector Pair with L0046 PW.

L950C:
Enable Distributor Trigger Interrupts.
RTI - All Done !