



(19) **United States**

(12) **Patent Application Publication** (10) **Pub. No.: US 2002/0107679 A1**  
Roelofs (43) **Pub. Date: Aug. 8, 2002**

(54) **VIRTUAL MODEL GENERATION VIA PHYSICAL COMPONENTS**

(57) **ABSTRACT**

(75) Inventor: **Gregory Robert Roelofs**, San Jose, CA (US)

Correspondence Address:  
**Corporate Patent Counsel  
U.S. Philips Corporation  
580 White Plains Road  
Tarrytown, NY 10591 (US)**

(73) Assignee: **KONINKLIJKE PHILIPS ELECTRONICS N. V.**

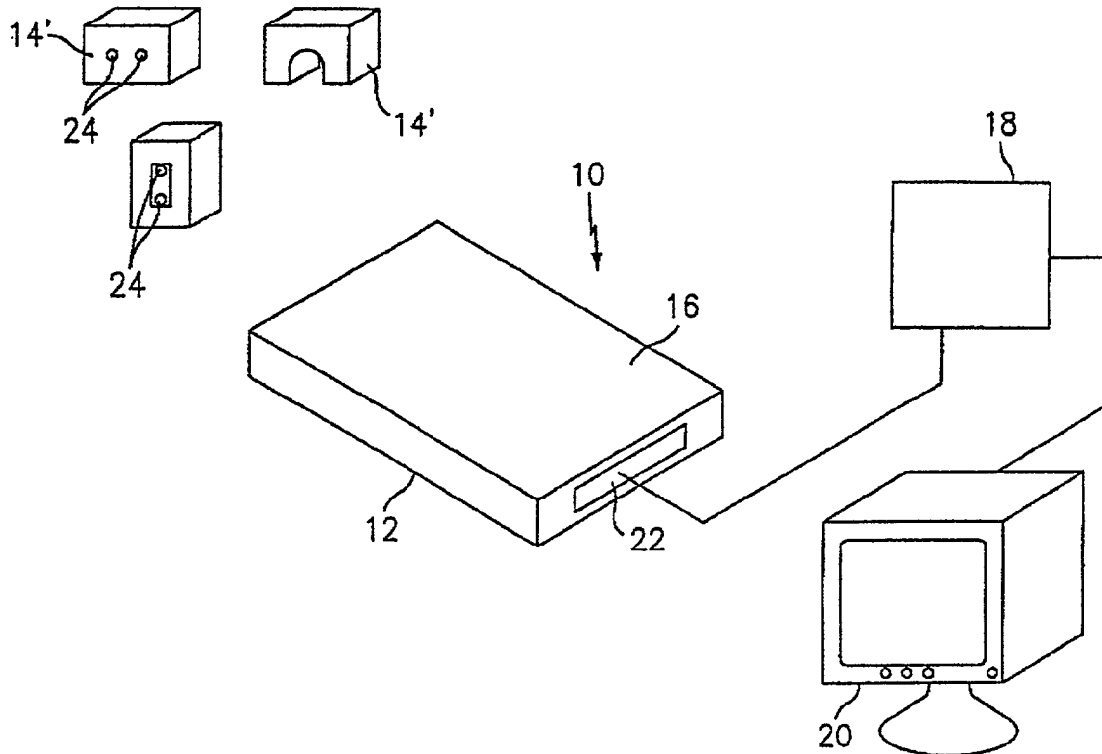
(21) Appl. No.: **09/777,504**

(22) Filed: **Feb. 5, 2001**

**Publication Classification**

(51) **Int. Cl.<sup>7</sup>** ..... **G06F 9/45**  
(52) **U.S. Cl.** ..... **703/22**

A system for creating a virtual model of a physical structure in accordance with the present invention comprises a baseboard; at least one sensor providing sensor data; at least one building component capable of being sensed by the sensor and mountable on the baseboard; a computer interfaced with and receiving data from the sensor, for determining the position and dimensions of each component mounted on the baseboard based on the sensor data; and wherein the computer creates a virtual model to be displayed on a computer display of a structure composed of each of the components mounted on the baseboard based on the position and dimensions of each of the components. The building components comprise electrical contact points having electrical signatures. The sensor is a circuit board connected to a power source and comprises a voltmeter, an ammeter, a switching network and a processor receiving data from the voltmeter and for controlling the voltmeter, ammeter and the switching network. The sensor senses the electrical signature, location and orientation on the circuit board of each building component.



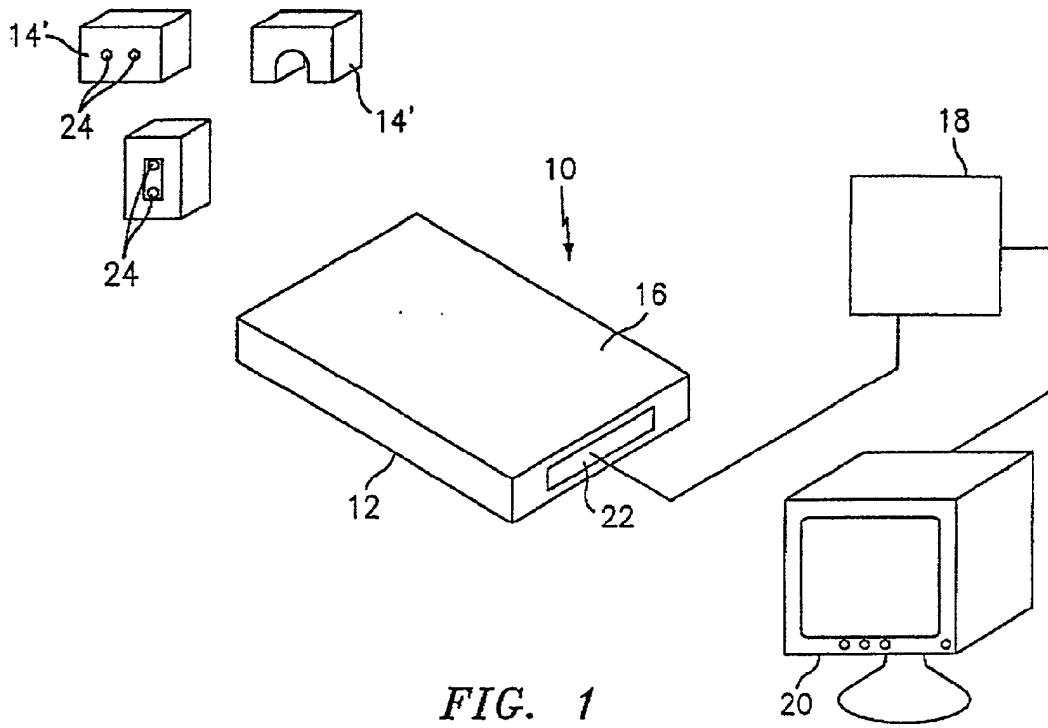


FIG. 1

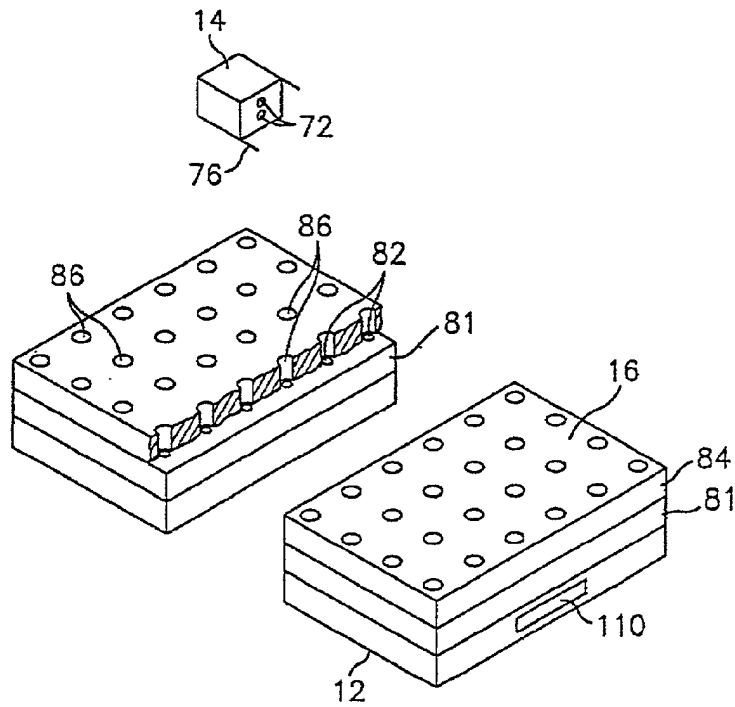


FIG. 2

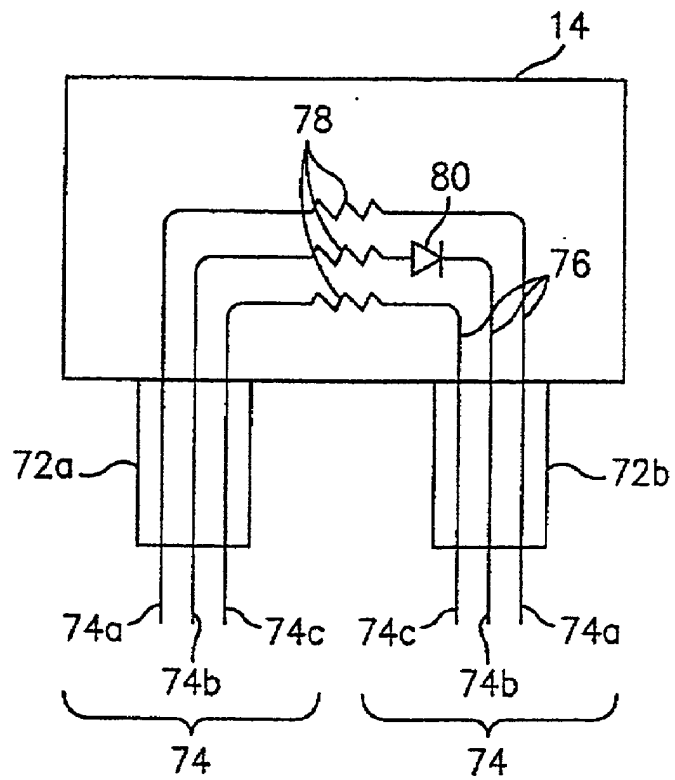


FIG. 3

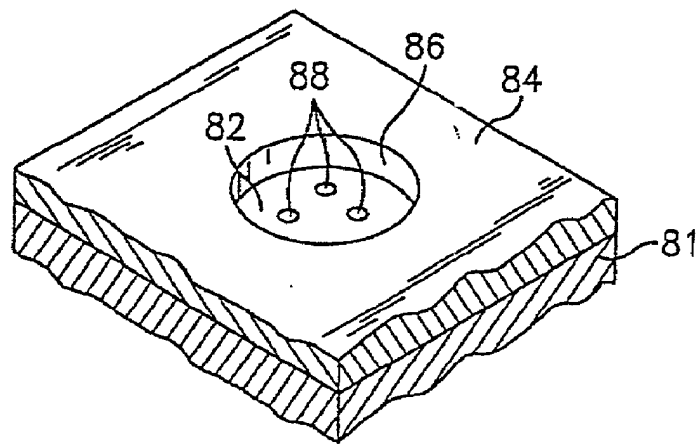


FIG. 4

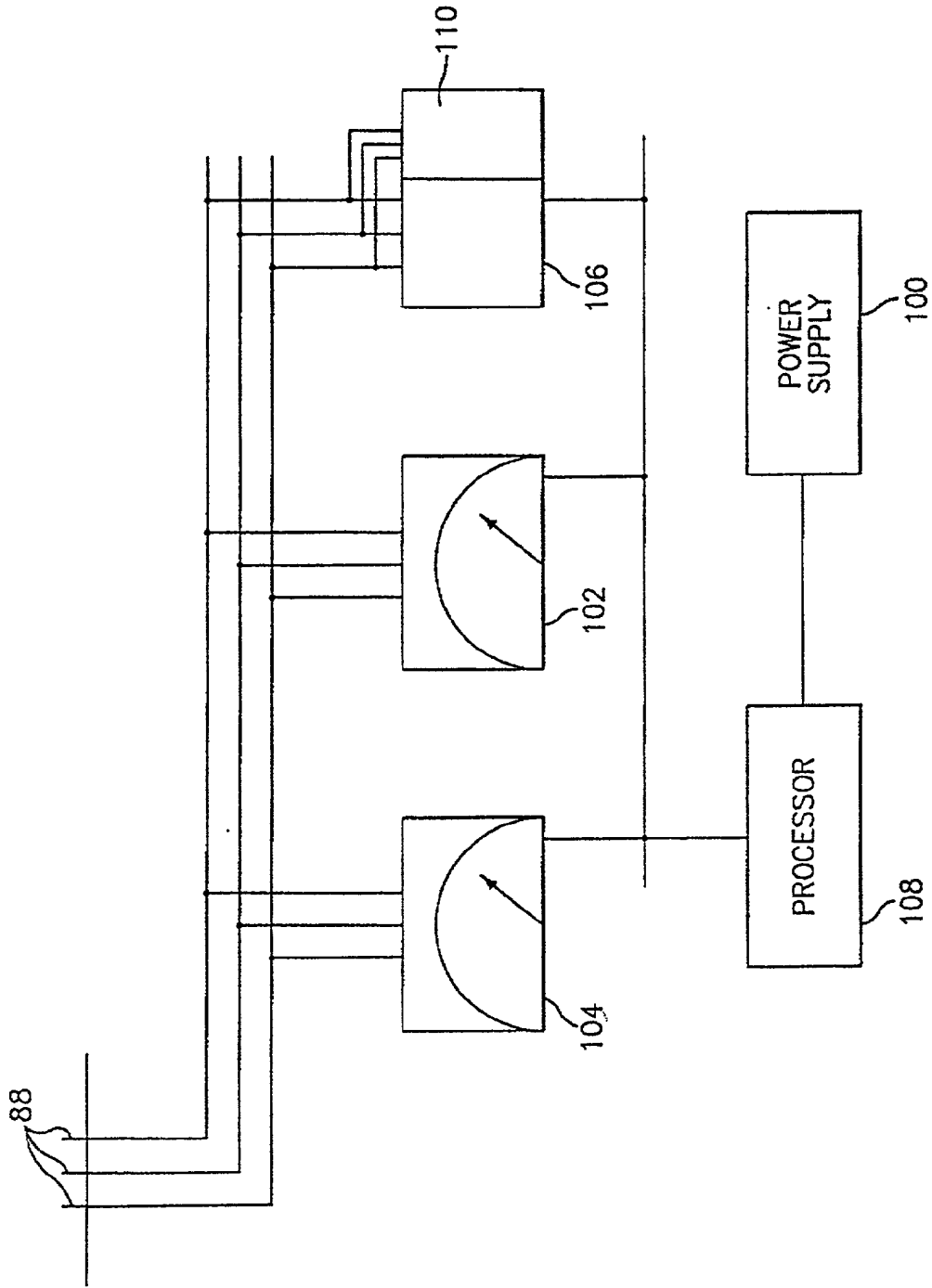


FIG. 5

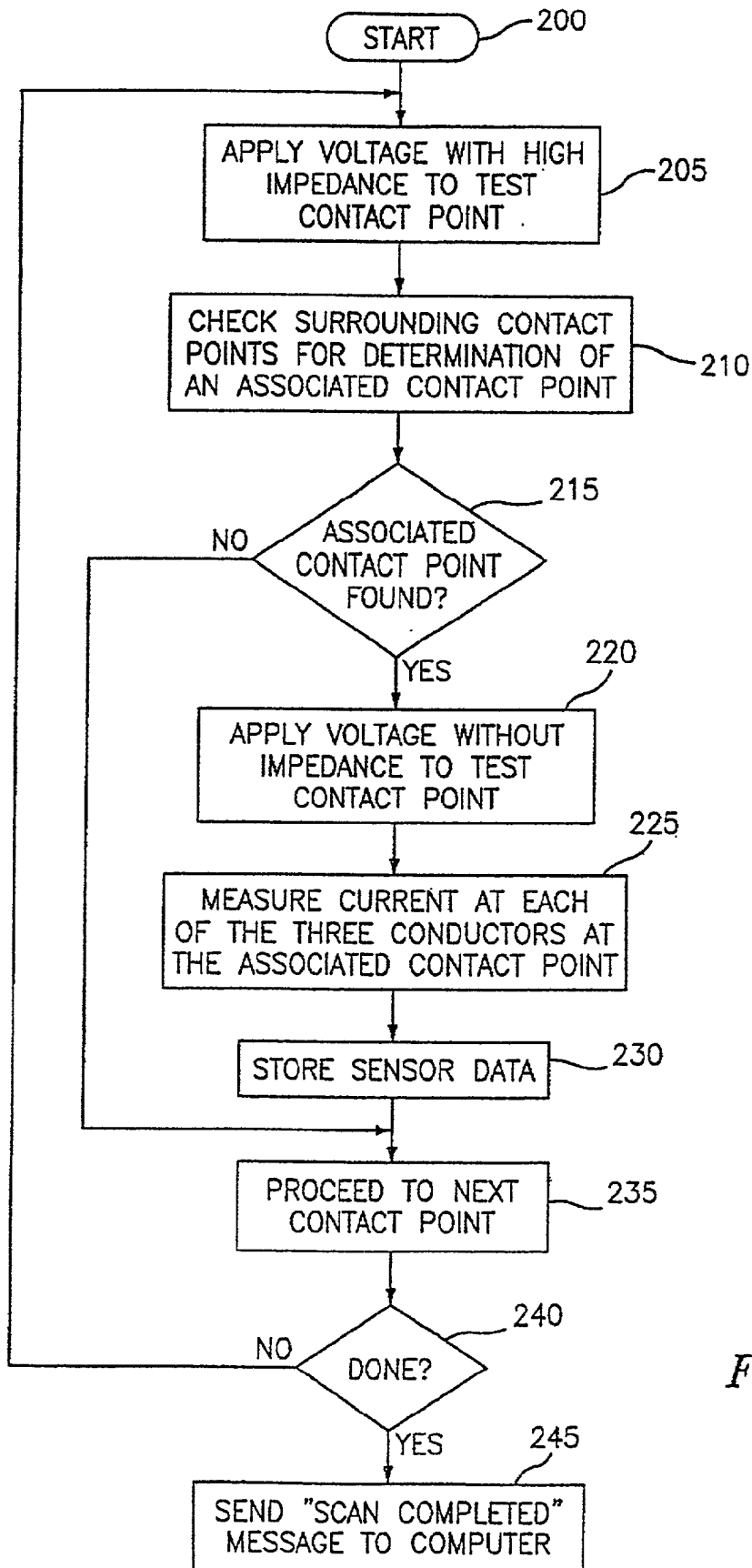
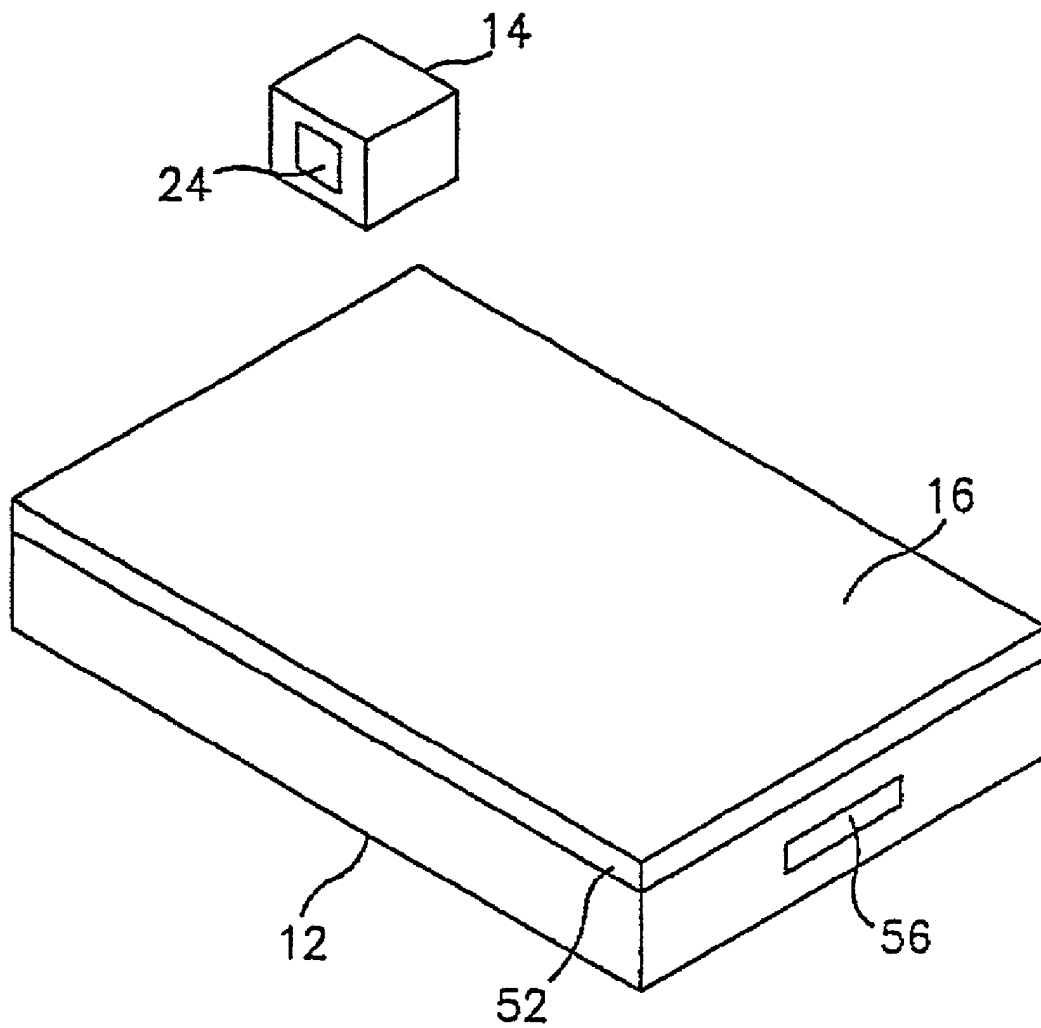


FIG. 6



*FIG. 7*

## VIRTUAL MODEL GENERATION VIA PHYSICAL COMPONENTS

### BACKGROUND OF THE INVENTION

#### [0001] 1. Field of the Invention

[0002] This invention relates to a system and method for creating a virtual model, and in particular, to a system and method of transforming a 3-D physical model formed of physical manipulable components, and translating the physical model into a virtual model.

#### [0003] 2. Description of Related Art

[0004] A small-scale model is often useful for designing or analyzing a full sized structure such as a building. Examples of models include a 3-dimensional model (such as a structure), a 2-dimensional model (such as a diagram) and a virtual model.

[0005] A virtual model is a computer display on a 2-dimensional surface of a 3-dimensional physical entity, wherein the image appears to be 3-dimensional. A virtual model can be created to model an actual or an imaginary 3-dimensional entity, which may be a man-made or natural entity. Virtual models are used for research, entertainment, and commercial as well as educational applications.

[0006] It is possible to apply software to the virtual model for many purposes such as for analyzing the physical entity, manipulating and modifying the virtual model, analyzing the modified version and creating imaginary entities. For cases in which the entity is man-made, the virtual model can be used to produce blue prints for the actual construction of the entity.

[0007] Computer programs exist, at various levels of sophistication, for providing the means to create virtual images. Typically a menu of 3-dimensional components is provided as well as tools for manipulation of the components such as mice, tablets and space balls. The user combines the components in spatial relationships by selecting components and their placement. Highly sophisticated computer drafting tools, such as Computer Aided Design (CAD), are used by trained professionals, such as engineers. Less technically oriented computer modeling tools, for example virtual reality building tools, such as Active Worlds, Cosmo Worlds, VRCreator, Internet3D Space Builder, V-Realm builder, etc., are available to the layman; however, even these require spatial recognition, the ability to understand and manipulate the virtual model and a level of comfort with the use of computers.

[0008] A disadvantage to current computer virtual model tools is the limitation of choices available for the selection and manipulation of the virtual components. Furthermore, a gap exists between reality and virtual models. It is difficult to produce a virtual model that models accurately a concept in a designer's mind. This may lead to the designer of a virtual model being dissatisfied with a physical rendition of the virtual model built according to blueprints produced from the virtual model.

[0009] Head-mounted displays, data gloves and other body sensors may also be used to manipulate virtual objects, optionally with tactile feedback. However, these do not provide a means for sensing the actual components of a

physical structure for producing an accurate virtual model of the structure. Furthermore, such devices are very expensive.

[0010] 3D laser scanners, used for virtual 3-Dimensional reproductions of physical objects, are restricted to small volumes, and are also very expensive.

[0011] Problems also exist relating to the creation and manipulation of a virtual image due to the lack of ability of the average human to convert between a mental image or observed physical entity and an actual 3-dimensional image. Conceptualization of spatial relationships is an aptitude that is often undeveloped or lacking in the layman. Creation of a virtual image of an existing or imaginary entity poses a challenge for persons not trained and skilled in spatial drawing and computer usage.

[0012] In contrast, from an early age, children learn and play by manipulating objects and creating structures. Adults usually have a highly developed ability to build and modify a structure according to a mental image or an observed physical entity. Average people, including children, are able to create a miniature physical model of a full sized structure when provided with the proper tools.

[0013] However, although it is far easier for the average person to create a physical model of a full sized structure than a virtual model, the virtual model provides many benefits, which a physical model cannot.

[0014] A system for creating a virtual model based on a structure built from a construction toy is disclosed by Mitsubishi Electric Research Laboratory (MERL) in an article entitled "Tangible Interaction+Graphical Interpretation: A New Approach to 3D Modeling" by David Anderson et al., (April, 2000) (published in the Proceedings of SIGGRAPH 2000, Jul. 23-28, 2000 (New Orleans, La.) and also found at [www.merl.com/reports/TR2000-13/index.html](http://www.merl.com/reports/TR2000-13/index.html)). However, the MERL system is complicated and expensive to produce.

[0015] Accordingly, there exists a need for a simple and inexpensive system for converting a physical model into a virtual model.

### SUMMARY OF THE INVENTION

[0016] Therefore, it is an object of the present invention to provide an easy to use and understand system and a method for facilitating the creation of a realistic virtual model of a physical entity.

[0017] It is a further object of the present invention to provide a system and a method for creating a physical model of a physical entity and translating it into a virtual model.

[0018] It is a further object of the present invention to provide a system and a method for sensing and identifying the components of a physical structure, for sensing the location and orientation of the physical components in relation to a reference, and creating a virtual model of the physical structure based on the component's identity and its relative position of placement.

[0019] To achieve the above objects, a system for creating a virtual model of a physical structure in accordance with the present invention comprises a baseboard; at least one sensor providing sensor data; at least one building component capable of being sensed by the sensor and mountable on the

baseboard; and a computer interfaced with and receiving data from the sensor, for determining the position and dimensions of each component mounted on the baseboard based on the sensor data; means wherein the computer creates a virtual model to be displayed on a display means where the virtual model is a model of a structure composed of each of the components mounted on the baseboard based on the position and dimensions of each of the components.

[0020] The building components comprise electrical contact points having electrical signatures. The sensor is preferably a circuit board connected to a power source and comprises a voltmeter, an ammeter, a switching network and a processor receiving data from the voltmeter and for controlling the voltmeter, ammeter and the switching network. The sensor senses the electrical signature, location and orientation on the circuit board of each building component.

[0021] The present invention also includes a method for creating a virtual model, to be displayed on a computer display, of a physical structure comprising the steps of sensing each component mounted on a baseboard; determining the position and dimensions of each component mounted on the baseboard based on the sensed data; creating a virtual model of a structure composed of each of the components mounted on the baseboard based on the determined position and dimensions of each component.

[0022] The method first senses the components by scanning an electrical circuit board formed on the top layer of the baseboard. The circuit board is scanned by successively testing each of an array of contact points having predetermined positions on the circuit board by applying voltages to each contact point and sensing voltage and current levels of proximate contact points. The voltage and current data provide the data used to determine the location, orientation and identity of each component. The identity is used to determine properties comprising the shape and dimension of each component.

#### BRIEF DESCRIPTION OF THE DRAWINGS

[0023] The above and other objects, features and advantages of the present invention will become more apparent in light of the following detailed description of an exemplary embodiment thereof taken in conjunction with the attached drawings in which:

[0024] FIG. 1 is a block diagram of the system in accordance with the present invention;

[0025] FIG. 2 is a partially exploded perspective view of a first embodiment of the baseboard of the system in accordance with the present invention;

[0026] FIG. 3 is a circuit diagram of the conductors in a building component of the system in accordance with the first embodiment of the present invention;

[0027] FIG. 4 is a detailed diagram of a portion of the circuit board of the system, in accordance with the first embodiment of the present invention;

[0028] FIG. 5 is a circuit diagram of the components of the sensor of the system, in accordance with the first embodiment of the present invention;

[0029] FIG. 6 is a flowchart of the steps performed while scanning the circuit board of the system, in accordance with the first embodiment of the present invention; and

[0030] FIG. 7 is a perspective view of a second embodiment of the baseboard of the system in accordance with the present invention.

#### DETAILED DESCRIPTION OF THE PREFERRED EMBODIMENT

[0031] Turning now to the drawings, in which like reference numbers identify similar or identical elements throughout the several views, in particular with reference to FIG. 1, the system, shown at 10, comprises a baseboard 12, building components 14 for mounting upon the baseboard 12, at least one sensor 16 for sensing each component 14 mounted on the baseboard 12. The sensor 16 provides sensor data to a computer 18. The computer 18 converts the sensor data into display data for providing a virtual image of a structure formed by the building components 14. A display means such as monitor 20 receives display data from the computer 18 and displays the display data.

[0032] The baseboard 12 provides a surface upon which the building components 14 are mounted. In the preferred embodiment the baseboard provides a plane of reference for the positioning of the building components. Furthermore, in the preferred embodiment, the baseboard 12 houses the sensor 16 and an interface 22 for interfacing between the sensor 16 and the computer 18.

[0033] Each building component is constructed of a material that is capable of being sensed by the sensor. Each building component is further provided with an identification means 24 capable of being sensed by the sensor. The identification means is preferably in the form of a label, which identifies the building component for purposes of identifying properties of the component such as the component's dimensions. The identification label can be a barcode, a color, a code produced by a microchip or any identifying feature. Building components that are capable of being placed in different orientations are constructed to provide the identification label to the sensor from the appropriate surface.

[0034] It is to be understood that the sensor can be comprised of separate components, which together provide the function of the sensor. The function of the sensor is to determine the position in space of each building component according to its dimensions. In the preferred embodiment this is accomplished by detecting the presence of each building component, detecting the position, including the orientation, of the building component and identifying the building component. Some examples of sensors include a camera, a sound detector, a thermal detector, an electrical circuit sensing the presence of an electrical stimuli, etc.

[0035] The interface 22 facilitates communication between the sensor 16 and the computer 18. The interface 22, for example, includes a port such as an RS-232 or USB port for facilitating a cable connection. The interface 22 may also be wireless, and include an interface for receiving optical waves, radio waves, infrared waves, etc. In other embodiments the interface 22 is means for connecting to a network intranet or the Internet. It is also contemplated that the interface 22 can be a separate unit from the baseboard. The computer 18 is any computing device, from a single microprocessor or micro controller to a computer system distributed over multiple processing nodes. The term "computer" is used in the most general sense. In one embodiment

the computer **18** is connected to the Internet and accessed by the sensor via the Internet. In another embodiment the computer **18** comprises a first computer interfaced to the sensor and a second computer in communication with the first computer via a network such as the Internet wherein the functions of computer **18** reside in the first and second computer.

[0036] The computer **18**, running a software application, processes the sensor data and transforms it into a virtual image of the structure formed by the building components **14**. In the preferred embodiment, the sensor data provides sufficient data such that the computer **18** can determine the identification and location of each building component **14**. The computer **18** determines the properties and dimensions of the building component **14** according to the identification of the building component **14**. The computer **18** combines the dimension information with the position information to provide display data for displaying a 3-dimensional image of the building component **14**. The computer **18** combines the display data for each component to form a virtual image of the structure formed by the building components **14**.

[0037] The software application and the functions of the computer **18** can be distributed amongst a processor associated with the sensor and the computer **18**. Furthermore, the software application and the functions of the computer **18** can be distributed between a local server and a remote server, for example a web server providing Internet service.

[0038] A first embodiment of the present invention is shown in FIG. 2. Each of the building components **14** is formed of a nonconductive material and further comprises at least one electrical contact point such as a projecting pin **72**, formed of a conductive material. The identification label **24** is an electronic signature sensed upon making electronic contact with the projecting pin **72**. In the preferred version the electronic signature is provided by passive electronic components associated with each pin **72**, such as at least one resistor providing a predetermined amount of resistance.

[0039] In a preferred embodiment, as shown in FIG. 3, each building component is provided with two associated conductive pins **72a**, **72b**. Each pin **72a**, **72b** is provided with at least one independent conductor, and preferably three conductors **74a**, **74b**, **74c**, each conductor **74** being independently addressable. Each conductor **74** is in mutual paired correspondence with another conductor **74** in its associated pin. As shown, conductors **74a**, **74b**, **74c** of pin **72a** correspond with conductors **74a**, **74b**, **74c** of pin **72b**, respectively. A conductive connection **76**, including a resistor **78**, is made between each pair of corresponding conductors. Each resistor **78** has a resistance selected from a group of resistance values. In the preferred embodiment the group of resistance values consists of 6-9 different resistance values such as 1k, 2k, 5k, 10k, 20k, 50k, 100k, 200k, and 500k ohms. The combination of resistors **78** selected for the conductive connections **76** in each structural component **14** provides the identification label **24** of the structural component **14**, readable upon applying a voltage across the connections **76** and measuring the currents flowing. A diode **80** is provided for one of the conductive connections between one of the corresponding conductor pairs. The diode **80** allows current to flow through the connection in only one direction.

[0040] In the preferred version, referring back to FIG. 2, associated pins **72a**, **72b** of a building component are located

proximate one another, and additional nonconductive pins **77** are provided as per design, for structural support of the building component **14** on the baseboard **12**.

[0041] In another embodiment, a building component having a small base is provided with one pin **72**, the pin **72** having two sets of corresponding conductors **74**. In another embodiment, the building components **14** are provided with greater than two pins. In yet another embodiment each pin **72** is provided with one conductor pair **74** having an identifying resistance associated with it, the resistance formed of a unique combination of resistors in series, the resistors being selected from a group of known resistance values.

[0042] Referring to FIG. 2, the sensor **16** of the first embodiment will be discussed. The sensor **16** senses the presence and position of each building component **14** on the top surface of the baseboard **12**. The sensor **16** further reads the identification label **24** for each building component **14**. The sensor **16** is comprised of a circuit board **81** providing an array of electronic contacts **82** at predetermined locations. In the preferred embodiment the sensor is the circuit board **81**, formed on the top surface of the baseboard **12**, covered by a nonconductive covering **84** having an array of holes **86** placed at a predetermined pitch, exposing the array of electronic contact points **82** on the circuit board **81**. As shown in FIG. 4, a conductor **88** is provided at each contact point **82** for making contact with each conductor **74** of the pin **72** to be inserted in the hole **86**. In the preferred embodiment, each contact point **82** has three conductors **88**. The sensor scans the circuit board **81** for mounted building components **14**.

[0043] FIG. 5 shows the preferred embodiment of a means for scanning associated with the sensor comprising: a means for applying voltage, such as a power source **100**, for applying voltage to a selected contact point **82**; a voltmeter **102** for measuring voltage at a selected contact point **82**; an ammeter **104** for determining the current at a selected contact point **82**; a switching network **106** for selecting contact points **82**; and an embedded processor **108** for controlling the voltmeter **102**, ammeter **104** and switching network **106** and receiving data from the voltmeter. The processor **108** is any processing device capable of receiving data from and controlling electronic devices. Interface **110** interfaces the processor **108** to the baseboard interface **22** for interfacing to the computer **18**. The processing and functions performed by the processor **108** associated with the sensor **12** and the computer **18** can be distributed between the processor **108** and the computer **18**.

[0044] In use, a user mounts building components **14** on the baseboard **12** by inserting each of its pins **72** in one of the holes **86** so that the pins **72** contact the circuit board **81**. When the user is ready to request that the physical model be transformed into a virtual model, the user activates the interface between the sensor **16** and the computer **18**. In the preferred embodiment, the interface means is housed within the baseboard **12**, and a cable is coupled at one end to interface **22** in the baseboard **12**, and at the other end to the computer **18**. The user runs a program on the computer for accepting the sensor data and converting it into virtual image data. The user initiates the process of transferring data from the sensor **16** to the computer **18** by making a selection via the computer **18** or a switch on the baseboard **12** coupled to

the sensor 16. In the preferred embodiment, the user initiates the process via a user interface associated with the computer 18, and the computer instructs the sensor to begin scanning the circuit board 81.

[0045] Control of the scanning process and storage of the sensor data is provided by the processor 108 of the sensor 16 or the computer, or a combination of the two.

[0046] The scanning process is shown in FIG. 6. The process starts at step 200 in which the first contact point 82 is selected as the test contact point. At step 205 a voltage is applied to the test contact point. It is only necessary to apply voltage to one selected conductor of the conductors without a connected diode, such as 74a or 74c. The voltage is applied with a high impedance, such as a transistor or an op-amp 110, so that the internal resistance in a structural component 14, which might be mounted there, is irrelevant. At step 210 a conductor corresponding to the selected conductor of the contact points 82 surrounding the test contact point are tested by the voltmeter to find a contact point which has a positive voltage, indicating that it is associated with the same structural component 14 as the test contact point. The size of the area surrounding the test contact point which is scanned for an associated contact point includes all contact points within a radius determined by the largest possible distance between associated pins of any structural component 14. At step 215 it is determined if an associated contact point was found. If not, control goes to step 235. If found, control goes to step 220. At step 220 a voltage is applied, without the high impedance, to each conductor, one at a time, of the test contact point. At step 225 the current is measured at each corresponding conductor of the associated contact point. At decision step 227 a determination is made if the final conductor has been tested yet. If not, control returns to step 220. Once all of the conductors have been tested control goes to step 230. At step 230 the sensor data, comprising the measured current values from step 225 together with the positions of the test contact point and the associated contact point, are stored. At step 235 the next contact point 82 on the circuit board 80 is selected. Each contact point 82 is selected once as a test contact point. At step 240 a determination is made if there are no more contact points 82 to be scanned, indicating that the scan is completed. If the scan is completed, a message or signal is transmitted to the computer 16. If the scan is not yet completed, control returns to step 205.

[0047] The sensor data is stored by the sensor 16 until the scanning process is completed. Upon completion, the stored sensor data is transmitted to the computer 18. Alternatively, the stored data is transmitted as it is produced, and stored by the computer 18.

[0048] For each pair of associated contact points two sets of data are stored. The current measured and stored in the first set of data of an associated pair of contact points for the current which passes through the associated conductive connection 76 that includes a diode is 0 amps. The current measured and stored in the second set of data for the same associated conductive connection, with current flowing in the opposite direction is non-zero and is indicative of the resistance of the resistor 78 provided for the associated conductive connection 76. The use of the terms first and second is not indicative of the order in which they were measured. The second set of sensor data provides the data

necessary for calculating the total resistance of the three associated conductive connections 76, which is the identification label 24 of the building component. The orientation of the building component is determined by zero current of the first set of data. Thus, the orientation together with the stored location of the associated pins and the identification label of the building component provides the necessary information for producing a visual image of the building component.

[0049] In another embodiment the identification label of each building component is determined prior to mounting it on the baseboard. For example, a building component identity code can be entered via a user interface such as a keyboard or a bar-code reader. Alternatively, intelligent recognition methods are used for identifying each building component 14. The position of the building component can be manually entered as well via a user interface.

[0050] When the scan is complete, the sensor data includes a value of the current measured for each set of associated contact points 82 on the sensor having contact with conductive pins 88 of each building component mounted. The computer 18 receives and processes the sensor data to determine the location and orientation of each set of associated contact points 82 as well as the identity of each building component 14. The computer 16 consults a database of profiles for building components and retrieves the properties of each building component identified. The properties include the shape and dimensions of the building component 14. From the properties retrieved the computer can produce a virtual image of each building component at a location corresponding to the actual position of the building component on the baseboard.

[0051] In the preferred embodiment the user has the option to continue building successive levels of building components that will be combined into a virtual display of a single multi-level structure. Each level is built separately on a baseboard 12. It is possible to use one baseboard 12 for multiple layers by disassembling each layer after it is scanned and proceeding to build a new layer. The user specifies to the computer at which level the new layer should be incorporated into the virtual model. In the preferred version the user can instruct the computer to include a layer multiple times in the virtual model.

[0052] In the preferred embodiment, the formation of the virtual image is performed upon completion of a structure, upon which the interface within the baseboard is connected to the computer. However, it is further possible to interface the baseboard to the computer while the building components are being mounted, and for the computer to provide an ongoing display of the structure as it is being built.

[0053] Referring now to a second embodiment shown in FIG. 7, the identification label of each building component 14 a magnetic signature, each label being accessible from a surface that is to be sensed by the sensor.

[0054] The sensor 16 comprises a magnetic sensing board 52 forming the top surface of the baseboard 12. The board 52 of the sensor 16 is capable of reading a magnetic signature identification label 24 of each building component 14 mounted on the baseboard 12, as well as sensing the location and orientation of the building component 14 on the board 52. Interface 56 is provided for communicating with computer 18.

[0055] In another embodiment, the building components **14** are formed of a conductive polymer and are placed directly on a sensor capable of sensing a conductive material such as a circuit board.

[0056] The 3-dimensional shape of each building component **14** is either sensed by the sensor, or stored in association with the building component's **14** identification by the sensor or the computer.

[0057] In another embodiment each of the building components **14** and/or the sensor comprise embedded microchips. Embedded chips in the building components **14** store the identification code. Alternatively the properties associated with the building components **14** are stored in the embedded chips in the building component **14** itself or alternatively in the sensor **16**.

[0058] In another embodiment, each building component includes sensor for sensing building components stacked directly on top of it. Furthermore, each building component includes an embedded chip for querying the building component stacked directly above it about its identity and what is stacked above it. Each building component stores sensor data relative to all of the building components stacked above it. The bottom layer of building components supplies all of the sensor data to the sensor housed in the baseboard. The baseboard produces its own sensor data and transmits its own sensor data plus the sensor data supplied by the bottom layer to the computer.

[0059] In another embodiment, building components include sensor for sensing neighboring building components, storing the sensor data and providing the sensor data to the computer **18**.

[0060] It is contemplated that the building components **14** are actual components, such as bricks, beams and panels, to a full sized structure. Virtual modeling of an actual structure provides the means to analyze the structure by using computer processing tools. The computer **18** analyzes the existing structure according to the properties of its components, environmental factors, the actual condition of the structure and users' present/future needs. Thus, the invention is a tool for making determinations relating to events such as a predicted earthquake, flood, hurricane; planning of renovations for future needs; assessment of damage due to aging or disasters; and analysis of structures relative to predicted warfare.

[0061] It is also contemplated that various structures can be modeled via the building components mounted on the baseboard. For example, the baseboard could be a mannequin and the building components could be articles of dress; the baseboard could be any reference point or surface and the structure could be a transportation vehicle or a mechanical device. The structure is transformed into a virtual model according to the properties of the building components. It is also possible for the virtual model to simulate motion of the components of the structure while incorporating the properties thereof.

[0062] While the invention has been shown and described with reference to certain preferred embodiments thereof it will be understood by those skilled in the art that various changes in form and detail may be made therein without departing from the spirit and scope of the invention as defined by the appended claims.

What is claimed is:

1. A system for creating a virtual model, to be displayed on a computer driven display, of a physical structure comprising:

a baseboard;

at least one sensor providing sensor data;

at least one component capable of being sensed by the sensor, each component being mountable on the baseboard;

a computer interface for coupling the sensor to a computer, the computer determining the position and dimensions of each component mounted on the baseboard based on the sensor data, and the computer creating a virtual model to be displayed on a computer display of a structure representative of an arrangement of the components when mounted on the baseboard.

2. The system according to claim 1, wherein each component comprises a material capable of being sensed by the sensor when the component is mounted on the baseboard, and includes

an identification label capable of being sensed by the sensor;

wherein the sensor data comprises identification data sensed from the identification label and location and orientation data for each component sensed; and

wherein the sensor data is stored by one of the computer and the sensor.

3. The system according to claim 1, wherein each component is formed of a nonconductive material and further comprises at least one projecting electrical contact point formed of a conductive material; and

wherein the sensor comprises a circuit board providing an array of electrical contact holes at predetermined positions; and

wherein each of the projecting contact points of each of the components is receivable within each of the holes for making electrical contact with the circuit board.

4. The system according to claim 2, wherein one of the sensor and the computer store property data associated with the identification data for each component, and wherein the property data comprises data representative of the dimensions and shape of the component.

5. The system according to claim 2, wherein the identification label of each component comprises an electronic signature; and

the sensor is a circuit board capable of sensing the position of each mounted component and its electronic signature.

6. The system according to claim 2, wherein the identification label for each component comprises a magnetic signature; and

wherein the sensor comprises a magnetic sensing board capable of reading the position and magnetic signature of each mounted component.

7. The system according to claim 3, wherein the sensor is formed on the top surface of the baseboard, and wherein the circuit board is covered with a nonconductive covering

having an array of holes placed at predetermined positions for exposing an array of electrical contact points on the circuit board.

**8.** The system according to claim 3, wherein the sensor is connected to a power source and accesses a voltmeter for testing for a positive voltage, an ammeter for determining current at contact points having a positive voltage, a switching network and a processor receiving data from the voltmeter and for controlling the voltmeter, ammeter and the switching network.

**9.** The system according to claim 3, wherein each component has two associated electrical contact points, and

wherein each electrical contact point of each component comprises a plurality of conductors wherein each of the conductors in one of the electrical contact points is in one to one paired correspondence with one conductor in the associated contact point;

wherein each electrical contact hole on the circuit board has a plurality of conductors; and

wherein electrical contact between a contact point of a mounted component and a contact hole of the circuit board comprises one to one electrical contact between the plurality of conductors in the contact point of the mounted component and the plurality of conductors in the contacted contact hole of the circuit board.

**10.** The system according to claim 8, wherein the sensor data comprises the location of contact points on the circuit board having electrical contact with associated contact points of mounted components and current values read by the ammeter for associated contact points.

**11.** The system according to claim 9, wherein the paired conductors in each component are independently electrically connected, each electrical connection comprising at least one resistor selected from a predetermined group of possible resistors; and

wherein an identification label of each component is comprised of the selected resistance.

**12.** The system according to claim 11, wherein each component comprises two electrical contacts, each electrical contact comprises three conductors, and each electrical connection between paired conductors comprises one resistor.

**13.** The system according to claim 12, wherein for each component, one of the electrical connections between the paired conductors comprises a diode; and

wherein an orientation of each component is determined by determining which of the associated contact points of the component had a zero current value for the conductor pair in electrical connection with the diode.

**14.** A component formed of a nonconductive material, for mounting on a baseboard comprising:

a pair of associated electrical contact points; each contact point having a plurality of conductors; each conductor independently connected in one to one correspondence to an associated conductor in the associated contact point with each connection including a resistor selected from a predetermined group of possible resistors; and

wherein an electronic signature for identifying the component is comprised of a combination of the resistors of the plurality of the connections of the associated conductors of the component.

**15.** The component of claim 14, wherein one of the connections further includes a diode.

**16.** A software application receiving sensor data for at least one component mounted on a baseboard, comprising computer program code;

wherein the sensor data comprises data representative of an identity, orientation and a location on the baseboard for each component mounted on the baseboard;

wherein the computer code processes the sensor data for determining the identity, position and orientation of each component mounted on the baseboard;

wherein the computer code accesses property data including data representative of the dimensions and shape of each component available for mounting, for determining the dimensions and shape of each component mounted on the baseboard in accordance with the identity of each component;

the computer code creating a virtual image representative of an arrangement of the components mounted on the baseboard based on the shape, dimensions, orientation and location of each component mounted on the baseboard.

**17.** The software application according to claim 16,

wherein the baseboard comprises a circuit board;

wherein the sensor data comprises data indicative of current values and associated resistance associated with each contact point of a grid of contact points on the circuit board;

wherein the identity is determined according to the resistance associated with each component mounted on the circuit board.

**18.** A sensor for sensing the identity, location and orientation of components mounted on a baseboard comprising:

a circuit board, mounted on the baseboard, having a grid of contact points, each contact point having a plurality of conductors;

wherein the sensor is connected to a power source and accesses a voltmeter, an ammeter and a switching network; and

wherein the sensor further accesses a processor for receiving data from the voltmeter and for controlling the voltmeter, ammeter and the switching network.

**19.** A method for creating a virtual model, to be displayed on a computer driven display, representative of at least one component mounted on a baseboard, wherein each component mounted on the baseboard makes electrical contact with an electrical circuit board formed on the baseboard and wherein the circuit board has an array of contact points, each contact point having a predetermined location on the circuit board; comprising the steps of:

successively applying a high impedance voltage to each contact point for testing each contact point of the array of contact points, for determining the presence and location of a mounted component in electrical contact with the contact point being tested;

measuring the voltage for contact points on the circuit board within a predetermined radius of the contact point being tested;

determining that a component is in electrical contact with the test contact point and an associated contact point having a nonzero measured voltage, at the locations of the contact point being tested and the associated contact point, wherein the location of the contact point being tested and the associated contact point is location data for the component determined to be in electrical contact;

applying a low impedance voltage to the contact point being tested when determined to be in electrical contact with a mounted component;

sensing the current values for the contact point being tested and its associated contact point indicative of an identification of the component determined to be in contact with the contact point being tested and its associated contact point, wherein the identification of the component is identification data;

consulting a database of component identifications storing property data comprising dimension data for each component identification; and

creating a virtual model representative of an arrangement of the components when mounted on the baseboard according to a structure composed of each of the components based on the location data, identification data and property data for each component.

**20.** The method according to claim 19, wherein a level of components is mounted on a baseboard, and wherein a virtual image having successive levels is formed by the steps of:

creating a virtual model of a first level;

creating a physical structure for a second level;

creating a virtual model of the second level and integrating it into the virtual model of the first level.

\* \* \* \* \*