

Boathouse Snapshots, *compiled through PSC3 research*

PSC3 members are investigating what works or doesn't work in public, public-private, or private boathouses around the west. Below are some of the facilities that are contributing to our storehouse of Best Practices and Lessons Learned:

CSUS Aquatic Center, Lake Natoma (Rancho Cordova, CA)

Initiated by: CSUS, California Dept. of Boating & Waterways, rowing and sailing interests, American River Parkway advocates

Current size: eight acres

Opened date and facility: 19__, two cargo containers

Land ownership: federal and state agencies

Improvements owned by: public
Operations: The Aquatic Center is the sole operator of its programs, with direction from the CSUS Associated Students organization.

Facilities: the works

Budget: \$1.5 million, with \$1.4 million in revenues generated by fees, programs, special events, etc. and \$130,000 is generated by boat rentals.



Power, sail, and human-powered craft share this complex

Bair Island Aquatic Center, 1450 Maple St., Redwood City, CA

Initiated by: Six individual rowers and paddlers

Facility: Rowing club funded facility/business purchase with \$20 plus \$90 in loans from private investors. The loans were paid off in two years as membership grew to 300.

Land ownership: private corp.

Improvements owned by: BIAC

Operations: Hui Wa'a Outrigger Canoe Club provides management at \$8500/year; runs the business with volunteers from participating rowing, dragon boating, and outrigger clubs.

Facilities: weight room, shower, boat storage, berths



Berths for private power boats plus open storage

Boathouse Snapshots, *compiled through PSC3 research*

Jack London Aquatic Center, Oakland, CA

Initiated by: Parks and Recreation department
Land ownership: public agency
Improvements owned by: public
Operations: Parks & Rec Department
Facilities: the works



JLAC is to right of large building

Cedar River Boathouse, Renton, WA

Initiated by: Parks and Recreation department
Current size:
Opened date and facility: 19__
Land ownership: Boeing Corp deeded former hovercraft port to Parks & Recreation Department
Improvements owned by: public
Operations: Private concessionaire
Facilities: Showers, retail store.



Access to low-float dock is through building

Newport Aquatic Center, Newport Beach, CA

Initiated by: Individual paddlers
Opened date and facility: 19__, 8,000 square foot metal building
Land ownership: federal agency
Improvements owned by: nonprofit
Operations: Non-profit with income from participating clubs and Parks & Rec programming. All coaching and educational personnel are employees of the center.
Facilities: the works.
Budget: revenues generated by fees, programs, special events, etc. and boat rentals.



Facility has doubled in size since opening

Boathouse Snapshots, *compiled through PSC3 research*

Marin Rowing Club, Larkspur, CA

Initiated by: Rowing club

Land ownership: public

Improvements owned by: private

Operations: Private club

Facilities: low-float dock, showers, weight room, storage, trailer parking



Light-colored roof is boathouse

Green Lake, Seattle, Washington

Initiated by: Parks and Recreation department

Land ownership: public agency

Improvements owned by: public

Operations: Parks & Rec Department

Facilities: minimal



Building is shared with other parks&rec programs

Boathouse Snapshots, *compiled through PSC3 research*

Northwest Maritime Center, Port Townsend, WA

Initiated by: Rowers and private investors formed a nonprofit foundation

Land ownership: port? Improvements will be privately owned

Operations: Nonprofit operates a museum and chandlery and the Wooden Boat Festival which draws 25K+ visitors to Port Townsend annually

Facilities: plans major waterfront development with multi-sport user facility and boat storage



Red building in center is chandlery

Van Bebber Brothers, Petaluma CA

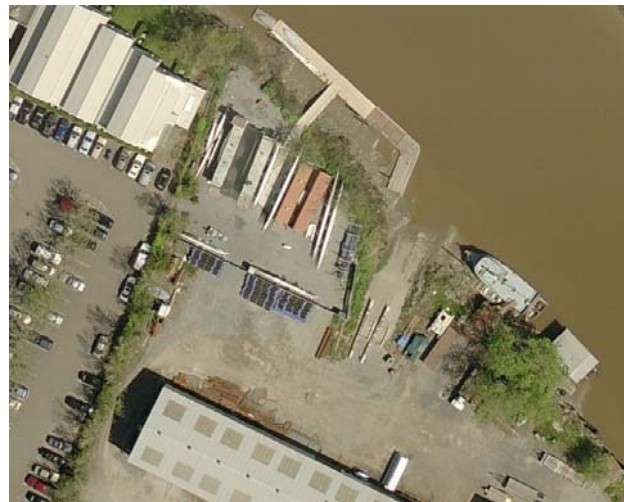
Initiated by: North Bay Rowing

Land ownership: private

Operations: NBRC and He'e Nalu

Facilities: containers, trailer parking, low-float dock and ramp, concrete ramp

Facilities: minimal



ramp is to lower right of dock