

template description

Cultural Arts Council of Sonoma County



The following pages will cover how to create additional .htm pages from the code that I've given you on cd. And will also talk about how to make nested tables, jump links, CSS, Behaviors, site definition, Library items and other things like that using Dreamweaver. I know you know how to do most of these already using straight HTML, but I've included directions on how to do it in Dreamweaver just for your reference as you build the site. I know you'll do great!

Names - Pages, Pictures, & Headers

Here is a reference of the page names and pictures. Please name each file accordingly or the navigation won't function properly.

Page files:

index.htm (Home)

 alert.htm (Arts Alert! overflow page)

join.htm (Join Us)

 individual.htm (Individual Member)

 business.htm (Business Member)

 volunteer.htm (Volunteer)

 form.htm (Membership Form)

contact.htm (Contact)

invest.htm (Invest in the Arts)

community.htm (Community)

assessment.htm (Assessment)

exhibitions.htm (Exhibitions & Events)

 schedule.htm (Schedule of exhibits & events)

jump.htm (Jump Start Public Art)

workshops.htm (Professional Development Workshops)

education.htm (Sonoma County Arts Education Alliance)

Big picture (on left side of screen):

join.jpg (Join Us)

 individual.jpg (Individual Member)

 business.jpg (Business Member)

 volunteer.jpg (Volunteer)

 logo_sm.gif (Membership Form)

contact.jpg (Contact)

invest.jpg (Invest in the Arts)

community.jpg (Community)

assessment.jpg (Assessment)

exhibitions.jpg (Exhibitions & Events)

 schedule.jpg (Schedule of exhibits & events)

jump.gif (Jump Start Public Art)

workshops.jpg (Professional Development Workshops)

education.gif (Sonoma County Arts Education Alliance)

Page Headers:

HDjoin.gif (Join Us)

 HDindividual.gif (Individual Member)

 HDbusiness.gif (Business Member)

 HDvolunteer.gif (Volunteer)

 HDform-sm.gif (Membership Form)

HDcontact.gif (Contact)

HDinvest.gif (Invest in the Arts)

HDcommunity.gif (Community)

HDassessment.gif (Assessment)

HDexhibitions.gif (Exhibitions & Events)

 HDschedule.gif (Schedule of exhibits & events)

HDjump.gif (Jump Start Public Art)

HDworkshops.gif (Professional Development Workshops)

HDeducation.gif (Sonoma County Arts Education Alliance)

Other Pictures:

program_tab.gif (this is the header pic above the side navigation)

collage.jpg (the six picture collage that goes on every page)

power_banner.gif (this is the purple strip at the bottom of every page. It links to join.htm)

sonoma.jpg (The Sonoma pic on the right side of every page)

logo.gif (The CACSC logo that appears on every page.)

home_bgBtm.gif (this is the background image for the top of the home page)

home_bgTop.gif (this is the background image for the bottom of the home page and the arts alert pop up page)

Colors Used in the Site

Dark Purple #4B215D

Medium Purple #9880A2

Light Purple #E7E1EA

Orange #FeAC3E

Light Orange #FADBAA

Brown #6F4827

Styles in the Site

I included all these style in the page code I gave you, but they are only document level styles. You can create a CSS using these same styles and link it to all the pages. After you do that, erase the document level styles that have been included in the pages I've made. Don't however, erase the styles that are included in any of the Library items. These have their own styles and won't be linked to the CSS.

```
body {font-family: Verdana, Arial, Helvetica, sans-serif; font-size: 11.5px; font-style: normal; line-height: 15px; font-weight: normal; font-variant: normal; text-transform: none; color: #000000; text-decoration: none; background-color: #FFFFFF; margin-top: 0px; margin-left: 0px; margin-right: 0px; margin-bottom: 0px;}
```

```
h5 {font-family: Verdana, Arial, Helvetica, sans-serif; font-style: normal; font-weight: bold; font-variant: small-caps; text-transform: none;
```

```
color: #6f4827; text-decoration: none; font-size: 13px;}
```

```
a {font-family: Verdana, Arial, Helvetica, sans-serif; color: #4b215d;}
```

```
a:link {text-decoration: none; color: #4B215D;}
```

```
a:visited {text-decoration: none; color: #684476;}
```

```
a:hover {text-decoration: underline; color: #4B215D;}
```

```
a:active {text-decoration: none; color: #6f4827;}
```

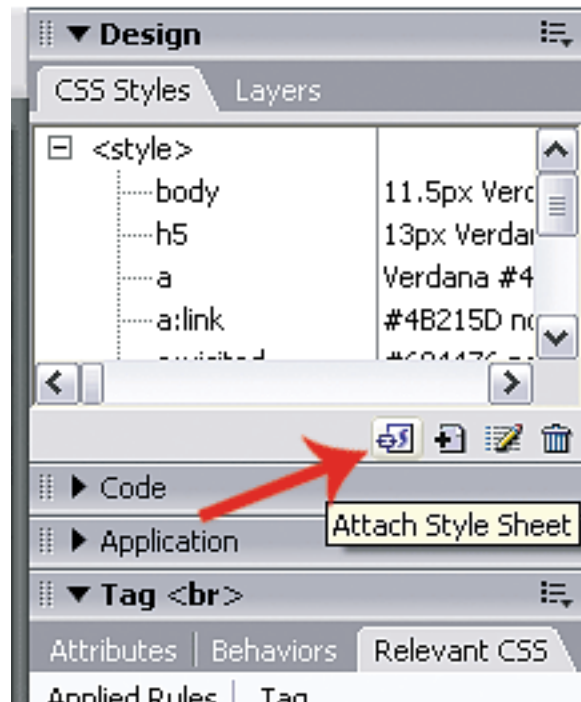
```
div {margin: 14px;}
```

```
.bold {font-family: Verdana, Arial, Helvetica, sans-serif; font-size: 11.5px; font-weight: bold; color: #4B215D;}
```

```
a.underline:link {text-decoration: underline;}
```

Creating the CSS

CSS in Dreamweaver is very easy you don't even need to hand code it. But you can do it whichever way you feel most comfortable.



1.) Open a page file and go to the Design palette (**Window>CSS Styles**) on the top of the window. Click the CSS Styles Tab to open it

if it isn't already. At the bottom of the palette is a button called 'Attach Style Sheet'. Click this button to open the 'Attach External Style Sheet' dialog box.

2.) Use the **Browse** button to locate the .css file. Choose to add as a 'Link'.

3.) Remember to go back and clear out the document level styles only after you've made sure the style

I know we haven't created a style sheet yet. But you have to link to it first. Then create it.

Okay then - now creating the CSS.

1.) In the picture above: click on the button right next to the 'Attach Style Sheet' - it's the icon that has a paper and a + sign. This one is called 'New CSS style'.

2.) This will open the following dialog box. At the bottom of the box where it says 'Define in:' - type the name of the css file (i.e.. cacsc.css). (But it might just already be there). And then choose which 'Selector Type'. The bottom one 'Advanced', that is for a:links. When you create a class style for an a:link (like the a.underline:link that we're using) you have to type that in the name box it isn't a separate class.

3.) So just repeat this until all the styles are there.

Where to use the .classes

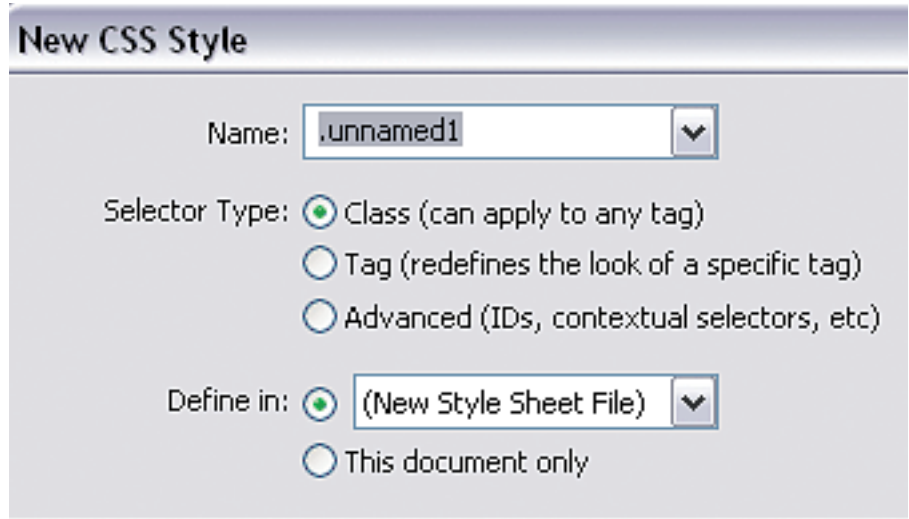
Let me explain where in the pages I used the different style classes.

All the main text has to be inside a <div> tag. I set the margins on the tag so that the text would line up with the indentation of the text in the Header graphics.

The **h5** tag I'm using at these settings for the brown, small-cap sub titles. Use this for all sub titles throughout the text.

The class 'bold', is for the sub sub titles. (Look at the join.htm page to see where exactly these are used.

The '**a.underline:link**' is for those sub sub titles that happened to also be external links. I wanted them to look the same as the other sub sub titles but stand out just a little. That's why they are underlined. Again, the best thing to do is just look at the file join.htm to see where exactly to use these.



Creating the Pages

There's all sorts of ways to do this. But rather than creating each page. It's really easiest to just copy the code from the previous page; that way you don't have to assemble the tables and navigation every single time.

1.) Open the join.htm file. Do a 'Save As...'. Name this page contact.htm (or whichever page you're working on).

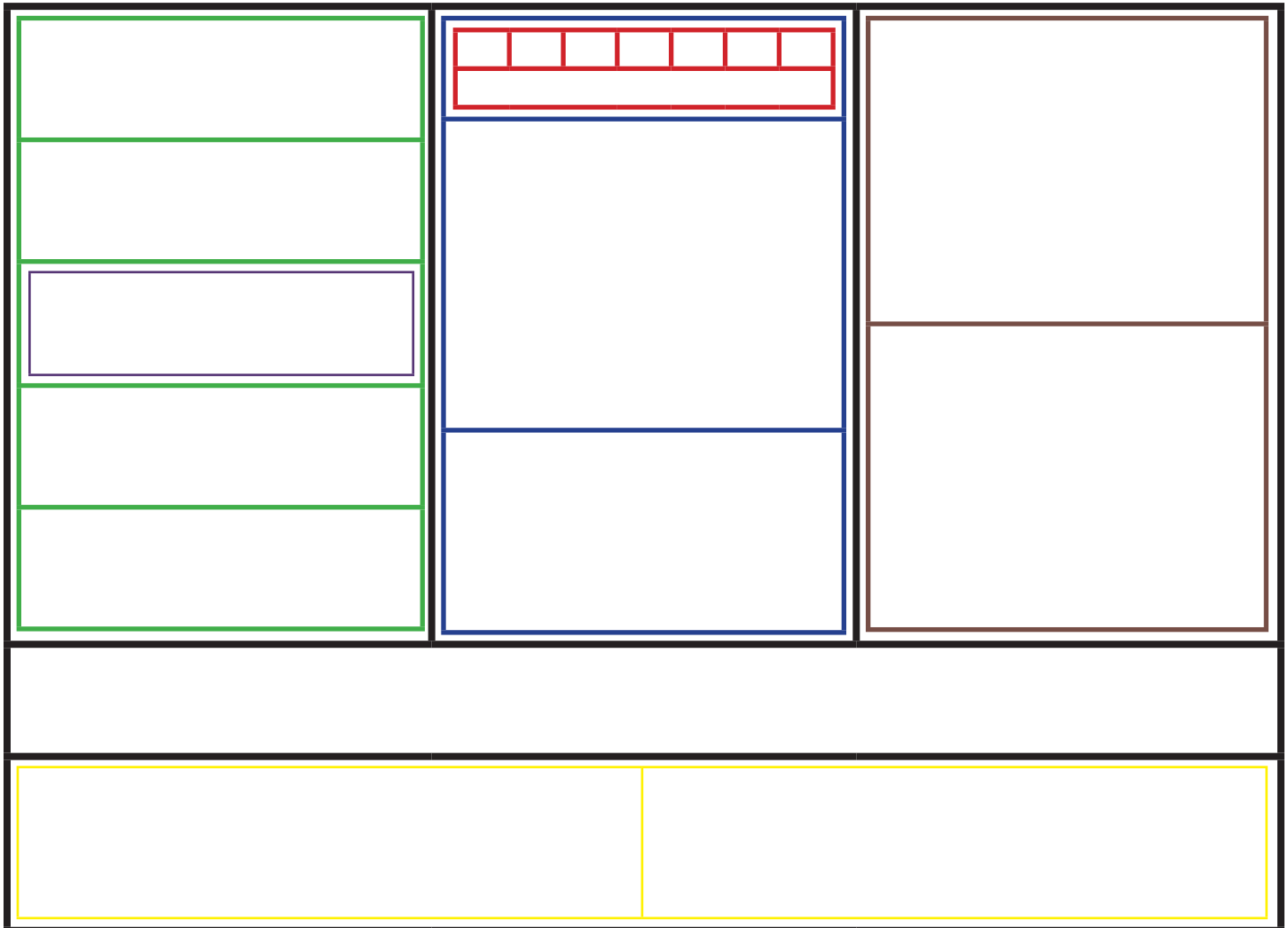
2.) Swap out the join.jpg picture in the top left corner with the contact.jpg. Swap out the header graphic (HDjoin.gif) with the header for that page.

3.) Highlight all the text. Delete it. Paste in the text for that page and format it using the style tags.

4.) The join.htm file has a place where the membership pages are linked. (left area - medium purple) Erase those and include any links that that page draws special attention to. (Like on the invest.htm page they have a link that says something like "Click here if you want to become a SmArt business and Invest in the Arts." Use the same formatting as the membership links.

Tables - Structure of the Nested Tables

The table structure in this site is a bit complicated (not really, just in other words - I love nested tables!) So I thought it would be easiest for you if I drew out the structure in different colors.



This is the table structure of every page. There is one main table with six nested tables. The listing of the tables is as follows:

Black = this is the main table. It consists of 3 columns, 3 rows, and has a cellSpacing value of 4. Its set width is 735 pixels. Bg color = #FFFFFF (white) However, the first column (the TD where the **green** table is nested), has a Bg color value of #9880A2 (medium purple). And the third column (the TD where the **brown** table is nested), this TD Bg color - #4B215D (dark purple).

Green = this table consists of 1 column and five rows. Width = 215px. Bg color = #FFFFFF (white). The TD where the nested **purple** table is has a Bg color = #4B215D. And a space ()

before the nesting of the **purple** table. This gives the small dark purple line above the med. purple column.

Purple = this table is nested in the third row of the **green** table. It is the side navigation and it is a Library item.

Blue = this table has 1 column and 3 rows. Width = 369px. Bg color = #FFFFFF (white). But the two bottom TDs have a Bg color = #E7E1EA (light purple).

Red = this table is nested in the first row of the **blue** table. It is made up of 7 columns and 2 rows. (with the second row having a colspan of 7). This is the area for the top navigation. Bg color = #FFFFFF (white).

Brown = this table has 1 column and 2 rows. Width = 139px. Bg color = #FFFFFF (white). There is also a space () right after the tag. This gives the white line between the picture and the following dark purple column.

Yellow = this table is nested in the last row of the **black** (main) table. It has 2 columns and 1 row. Width = 734px. Bg color = #FFFFFF (white). The second col width is set at 260 px. And is aligned horizontally 'right' and vertically 'top'. This is the bottom footer area.

All tables need to be aligned 'left', unless otherwise noted. And each TR needs to be horizontally aligned 'left', and vertically aligned 'top'. This will help keep the tables from cracking. (A web developers worst nightmare!) =]

The Membership Form

The Membership Form will not be using the same layout as the other pages. It will be opening in a pop window

1.) Open the file 'alert.htm'. We will be using this layout as a base for the form. Once you have the file open go to **File>Save As...** Save the file as 'form.htm'.

2.) You may need to adjust the width of the table to be wider. (just see how narrow you can get it with out it looking too bad. I'm shooting for under 400px or it won't be worth it to have a pop out. In that case we should just use a regular page. (We'll just stay in touch on this one and we'll see how it goes.)

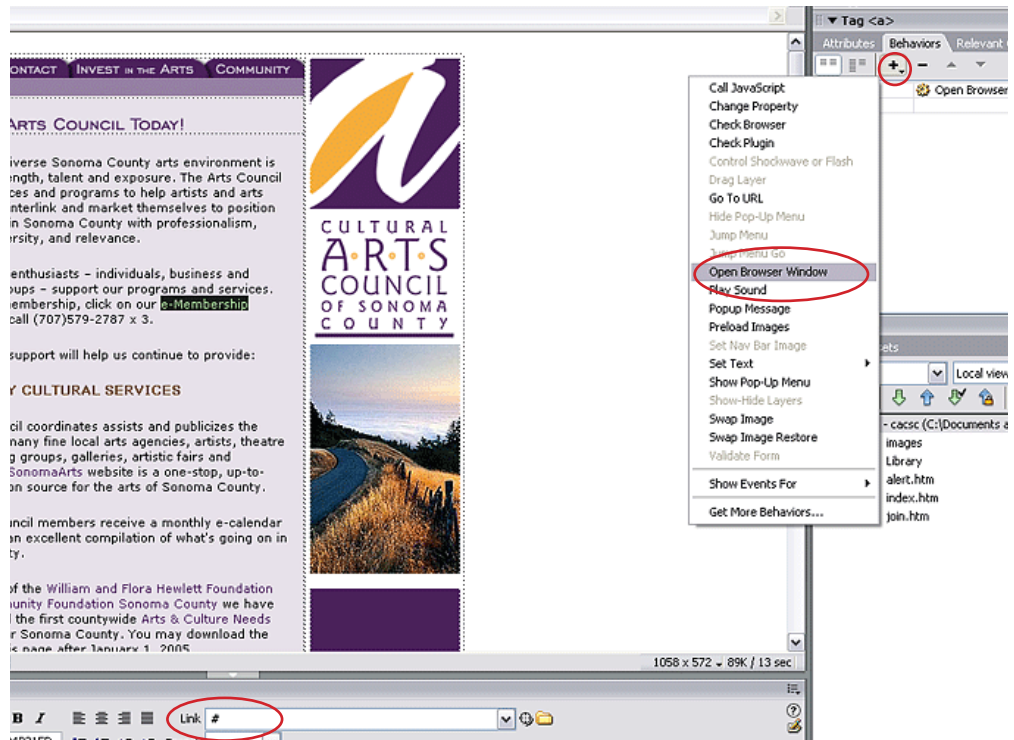
3.) Take out the background image and put in a background color of white. Use nested tables for the form and alternate the rows white and light purple (#E7E1EA). You can just leave the right column as is.

Behaviors - Open Browser Window

The Membership Form will open as a pop up window every time we link to it. It's a regular .htm page, we just need to put in a few more codes to get it to open as a pop up.

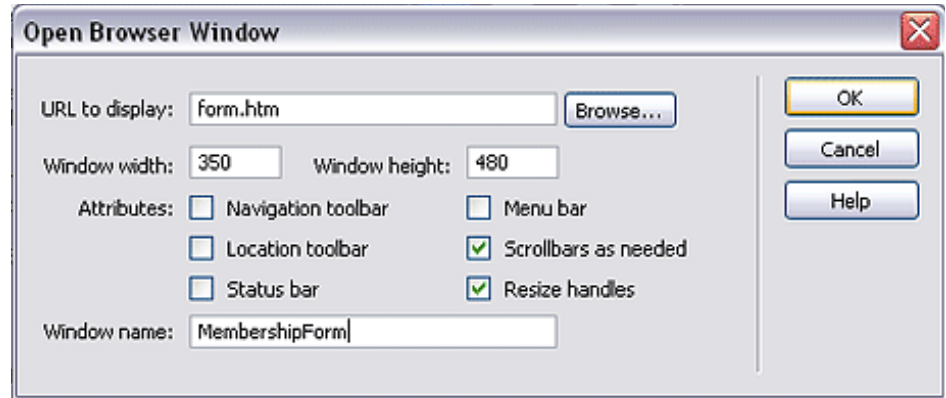
To link to the Membership Form (form.htm):

- 1.) Highlight the text and put a pound sign (#) in the 'Link' area of the **Properties palette**.
- 2.) Then go to the **Behaviors palette**. If it is not open go to **Windows>Behaviors (or shift+F3)**. Click on the + sign in the **Behaviors palette** and choose 'Open Browser Window'. This will open up the following dialog box:
- 3.) In this box you need to enter the following values. For 'URL to display:' this will be 'form.htm'. (You can manually type that in or you can use the **browse** button and locate the page.)



Window width will be 350. (I'm not sure exactly what the dimensions of the form page will be so I'm guessing here. The page should not be more than 400px. We'll just play with the width measurement until we get it to the exact number in pixels that the window will need to open at.

The height will be 450. (The window will scroll - so we don't need to worry about getting the height exact.) For **Attributes** check 'Scrollbars as needed' and 'Resize handles'. The 'Window name' is "MembershipForm" - all one word or it won't accept the code. Then click 'OK'.



the end

Alrighty then, sorry but time won't allow for any more. If you have any questions or need help you can email me or call or I'll get together with you and help you.